



SURFACE FINISHING
by Design & Craftsmanship

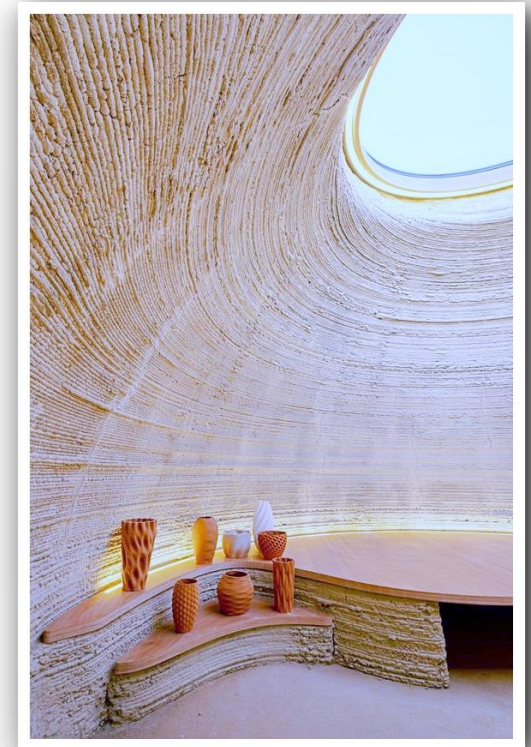
TANYARIN DECORATION

Innovated Surface Finishing by Design and Craftsmanship



Tanyarin Decoration has been a leader of surface finishing applicator by the reasons that our skilled team has been trained for the best and we use high quality of material from United Kingdom, Spain and Italy.

Tanyarin is a leader of high-performance surface finishes by creating high - value decoration and bringing very fine artistic moments to customers. Tanyarin has built up a wealth of experience to offer our extensive and service to architects, designers and contractors. We have the depth and breadth of technical knowledge as well as expertise to respond to the most challenging design and time - critical projects and the urgent transition to a low - carbon economy. We are Thailand's leading one stop provider of innovative decorative surface finishes and sculptural effects. We have become an integral part of many of Thailand's prestigious interior design projects. We have an impressive list of clients all over Thailand which established Tanyarin Decoration as the foremost supplier of high quality and innovative decorative surface finishes. Our enthusiastic and dedicated team will give competent and clear technical advice on all our products at your request. We can provide a product sample for standard colours and finishes and our skilled designers are also able to create match special and unusual designs, colours and finishes to yours.





TANYARIN & SUSTAINABILITY

Modern designers now face the challenge of considering the life-long environmental impact of architectural projects; responsibility doesn't end after the initial specification. They need to view the entire lifecycle of project components from raw materials to packaging to application and service life.

While many companies pay lip service to sourcing sustainable materials, Armourcoat's environmental commitment lies at the heart of the company.

Tanyarin imports Armourcoat from England to be our core material. The main raw ingredients of Armourcoat polished plaster are lime together with re-cycled marble powder, specially crushed and graded as a by-product of marble slab and tile manufacturing. This creates a positive environmental impact by intervention, ensuring it is re-used rather than land-filled.

The plaster is packed in paper sacks using a large proportion of re-cycled paper and delivered on re-cycled pallets from the food industry.

Coloured with natural pigments, Armourcoat polished plasters emit negligible VOCs (Volatile Organic Compounds) and are stable and resistant to UV light. The finish is also building friendly, being vapour permeable it allows the structure to breathe.



TANYARIN's Product

Stucco – Polished Plaster



Gilding

Special Paint

Floor

TR

Warpp

STUCCO POLISHED PLASTER



Stucco or polished plaster is a decorative finish for walls and ceilings for indoor and outdoor that is made from crushed marble or lime (clay + lime plaster), environmentally friendly components for sustainability concept. It is applied in thin layers and then polished to create a smooth surface. Tanyarin customizes colour, pattern and effect to meet design on demand with seamless purpose.



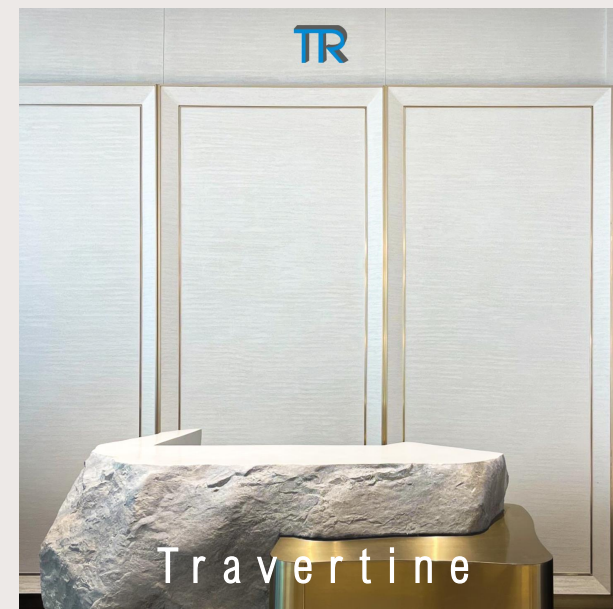
Smooth

TR



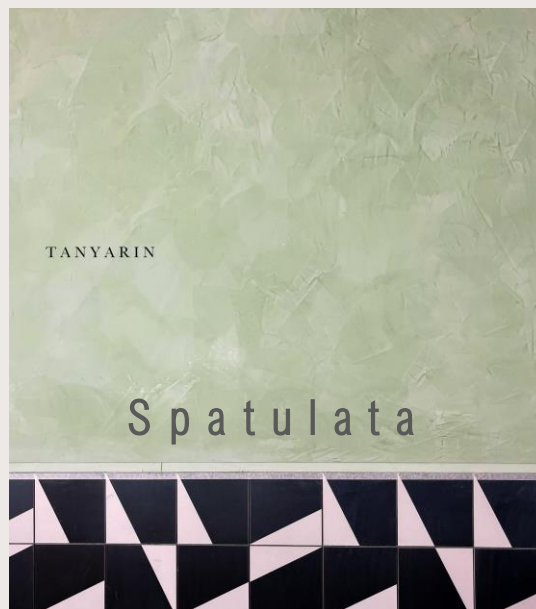
Clime

TR



Travertine

Stucco – Polished Plaster



TANYARIN

Spatulata



Concrete



Smooth

A luxurious finish with a natural stone look

Smooth is natural, mid-sheen finish with visible crushed marble and light burnishing from the trowel application. The Smooth polished plaster finish is similar to the marmorino stucco, used extensively in northern Italy during the Renaissance period as a background for the ornate frescoes which dominated much of the decoration of that time.
















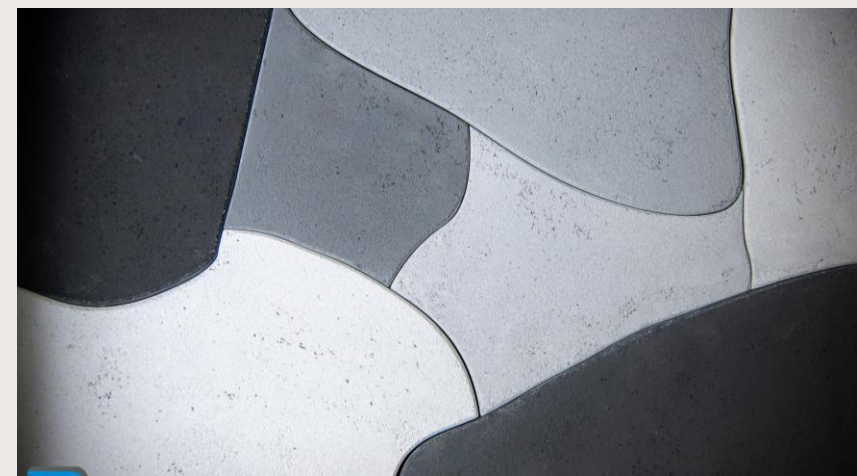
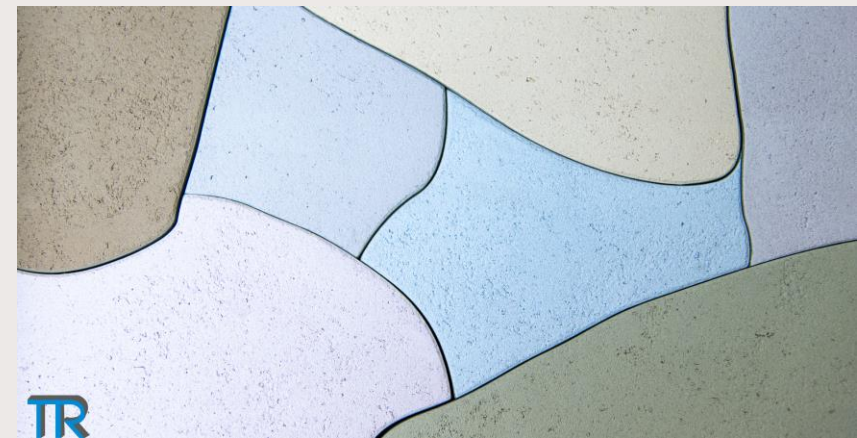
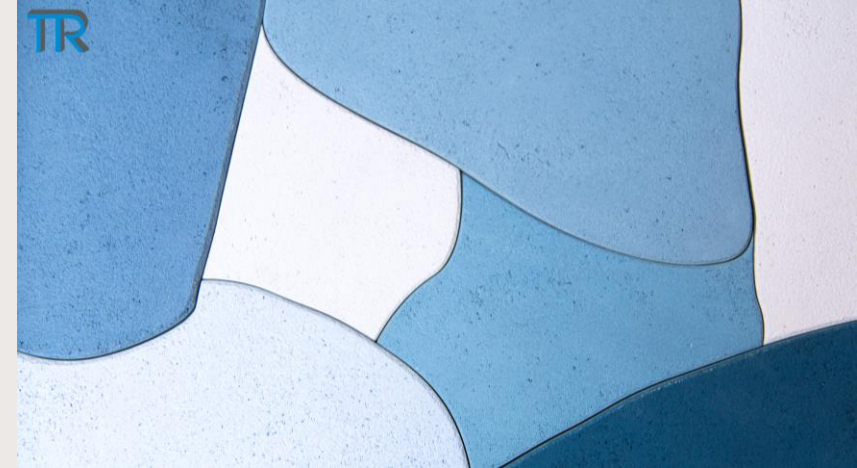


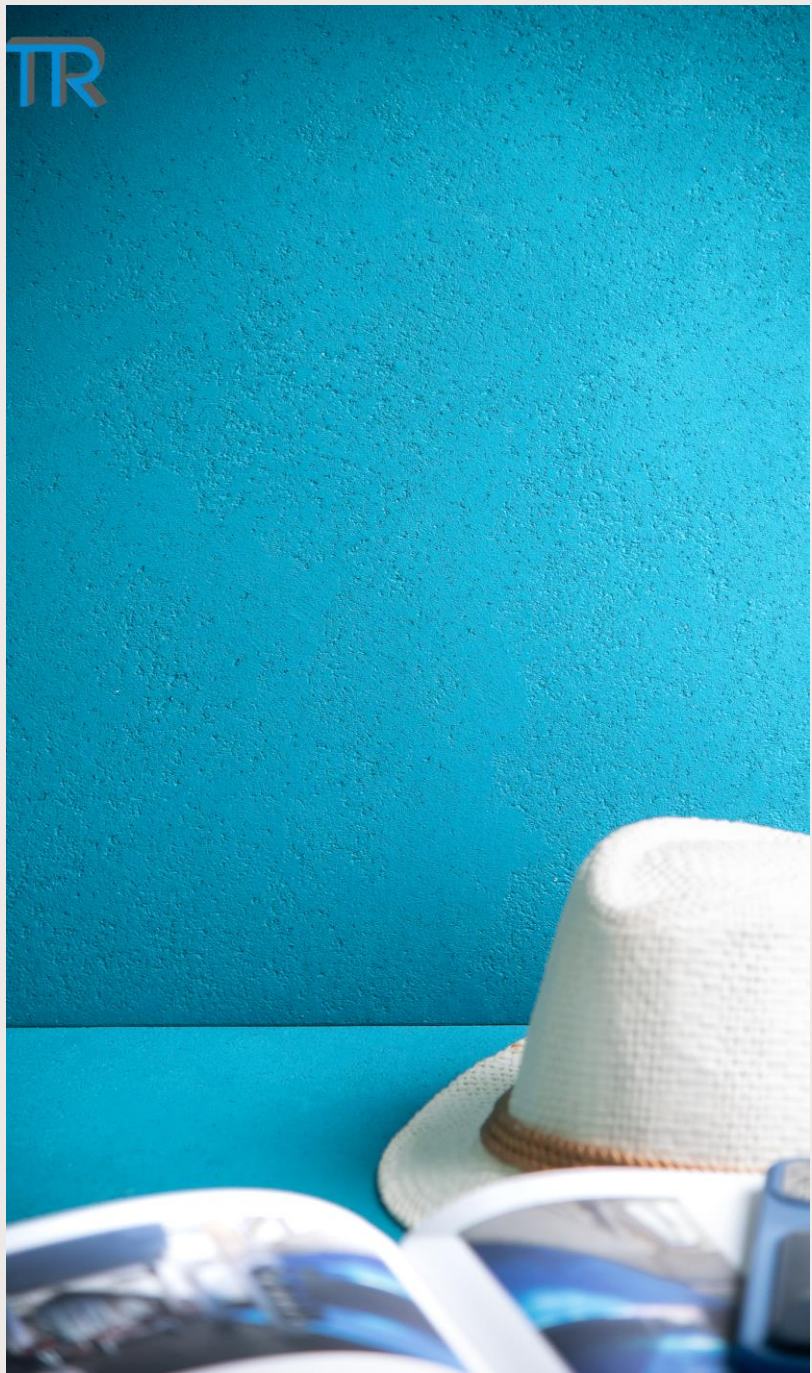
Calm Scene by Clime

Sustainable & Natural Material for Interior Decoration

Tanyarin Decoration
Crafted Surface Finishing

Beautifully aesthetic, bringing the outside in through its earthy natural pigments and textures. Clime includes recycled crushed marble to create a heavier texture, suitable for large areas where a more dramatic finish is desired. Clime Coarse is 100% cement and VOC free, biodegradable and has achieved IAC Gold Status, EPD and HPD classification. Due to the materials versatility, it can be used in both homes and commercial buildings, withstanding the demands of busy interiors.

















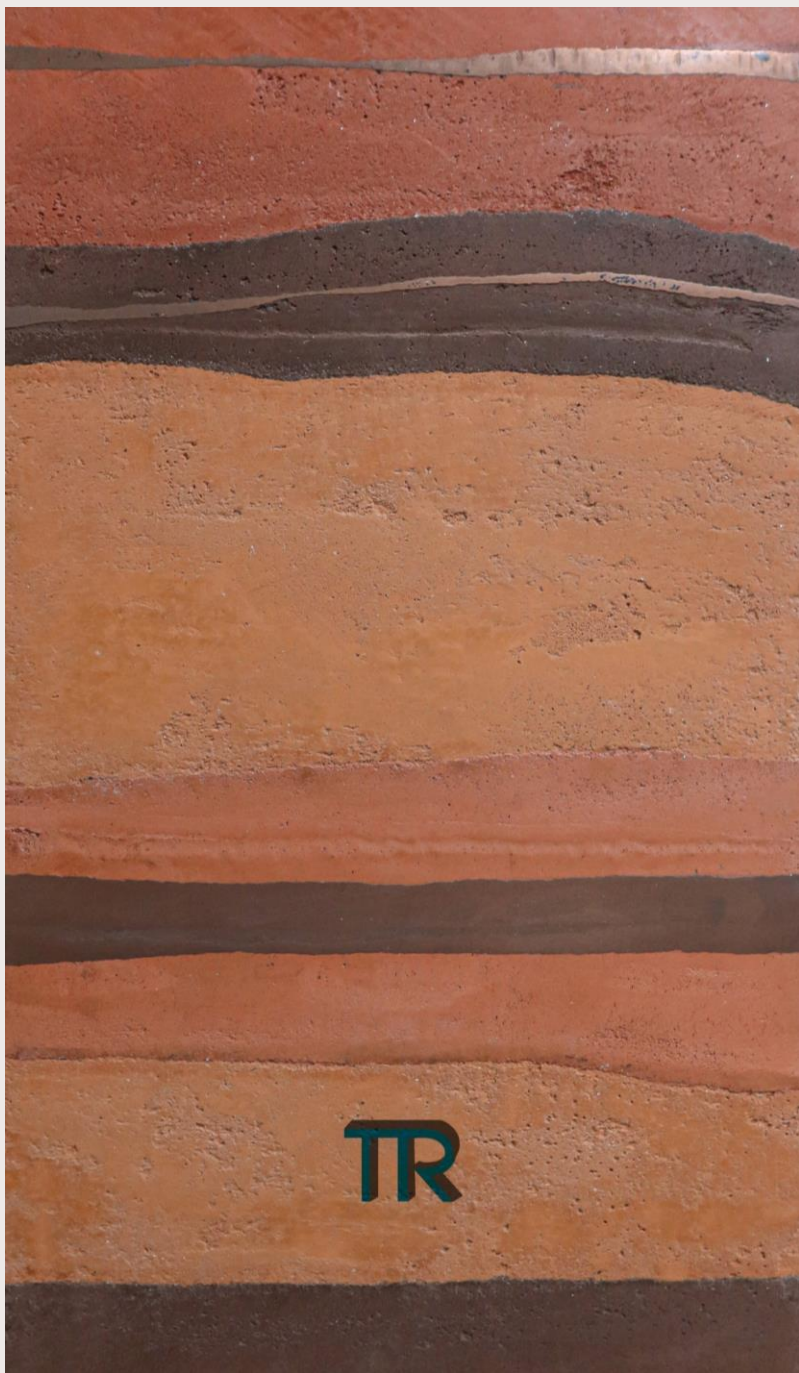












SPATULATA

Armourcoat Classically Luxurious Marble
Stucco Plaster Finish

Spatulata is a superfine, high gloss finish with a non-directional pattern. Made from aged lime putty and crushed marble, the remarkable depth and sheen of the finish is achieved through the craftsmanship of the applicator. Spatulata is applied in numerous fine layers and trowel polished to a glassy surface, highlighting the inherent movement created by the traditional application technique.



The image shows a wall with a light green, crumpled paper texture. The texture is composed of many small, irregular folds and creases, giving it a tactile appearance. At the bottom of the wall, there is a decorative border made of square tiles. Each tile is divided into two triangles by a diagonal line, with one triangle being black and the other being a light pink or lavender color. The tiles are arranged in a repeating pattern.

TANYARIN

This image shows a corner of the same wall. The light green, crumpled paper texture is visible on both the left and right walls. The geometric tile border at the bottom is also visible, featuring the same black and light pink triangular pattern. The corner is well-defined, showing the intersection of the two walls and the floor.

TANYARIN



TANYARIN

TANYARIN

TAN

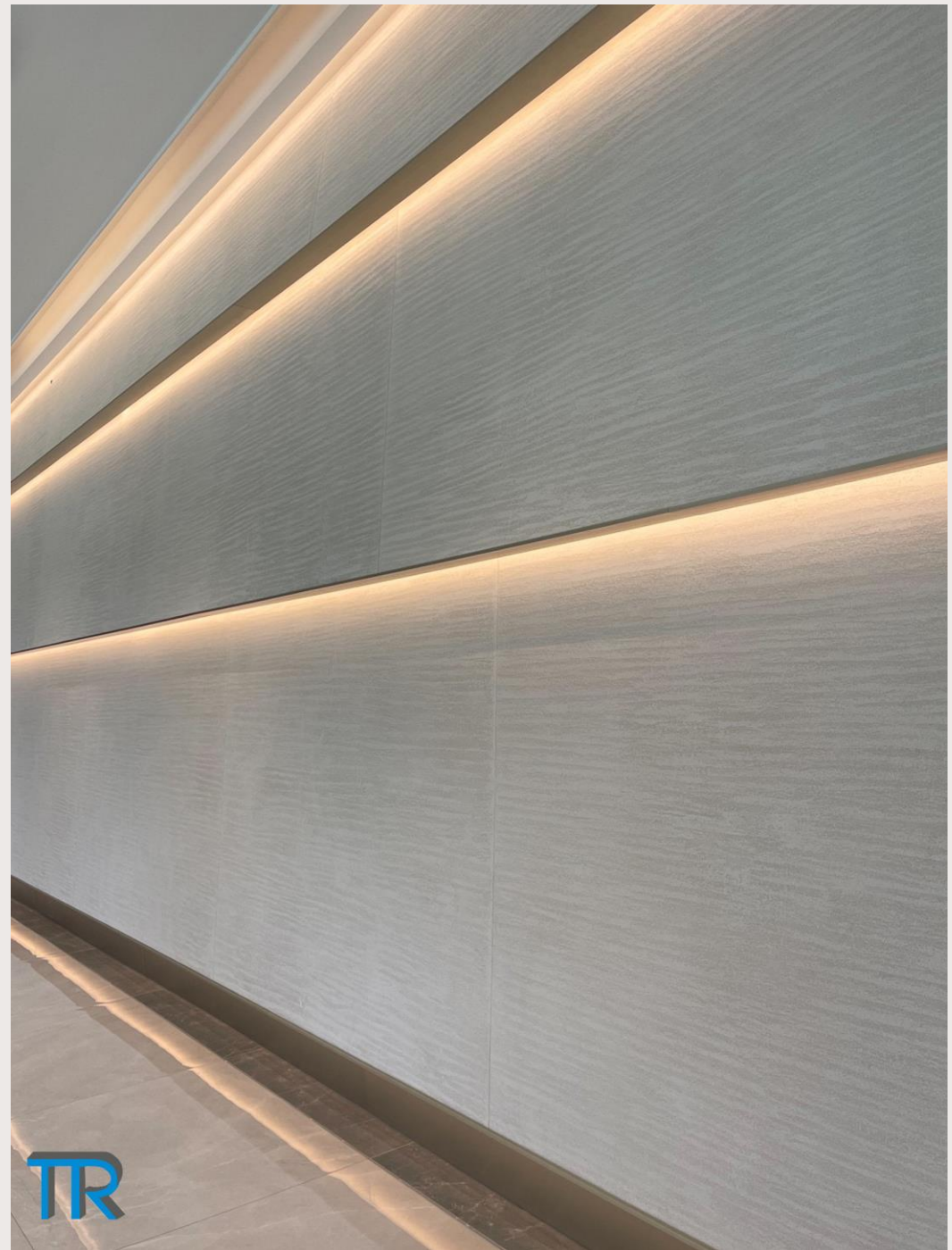


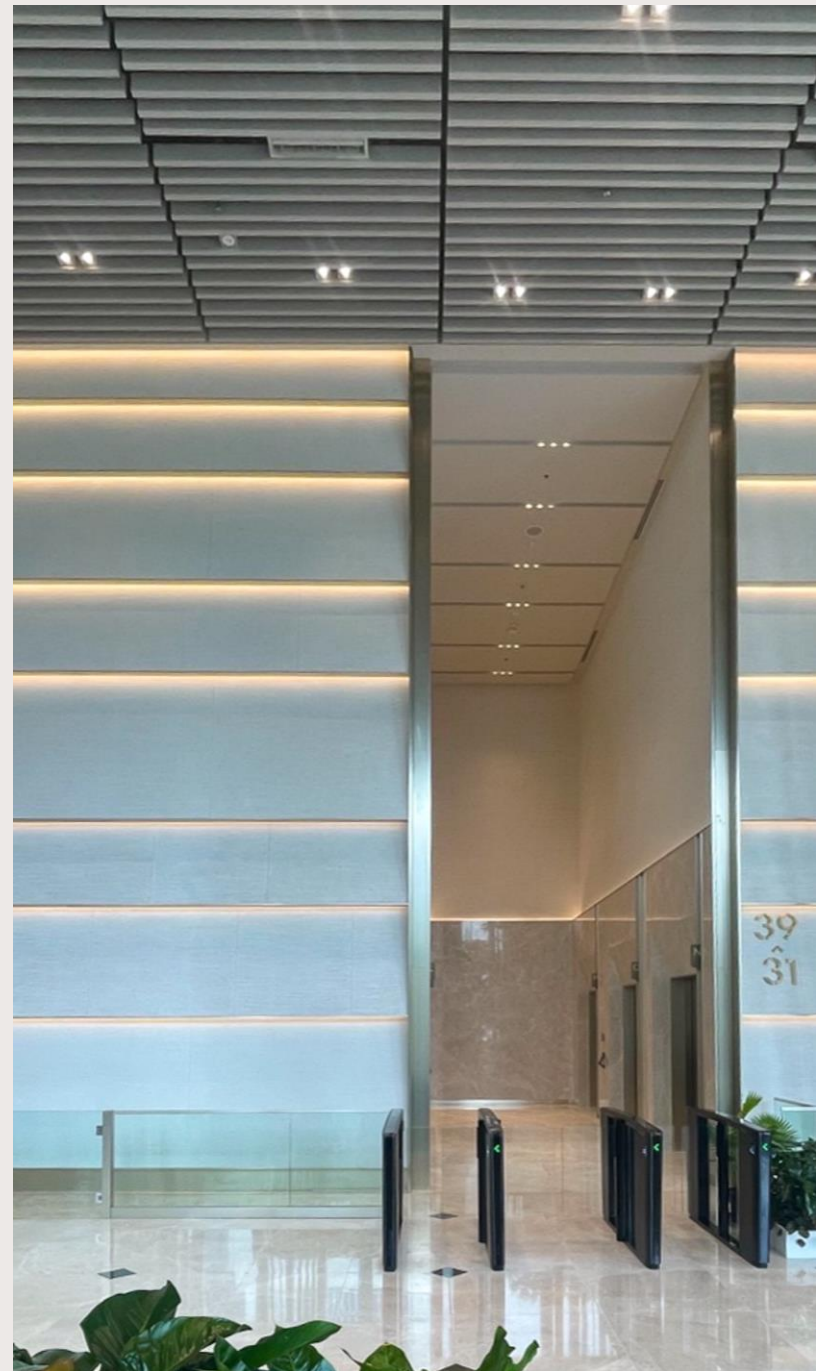
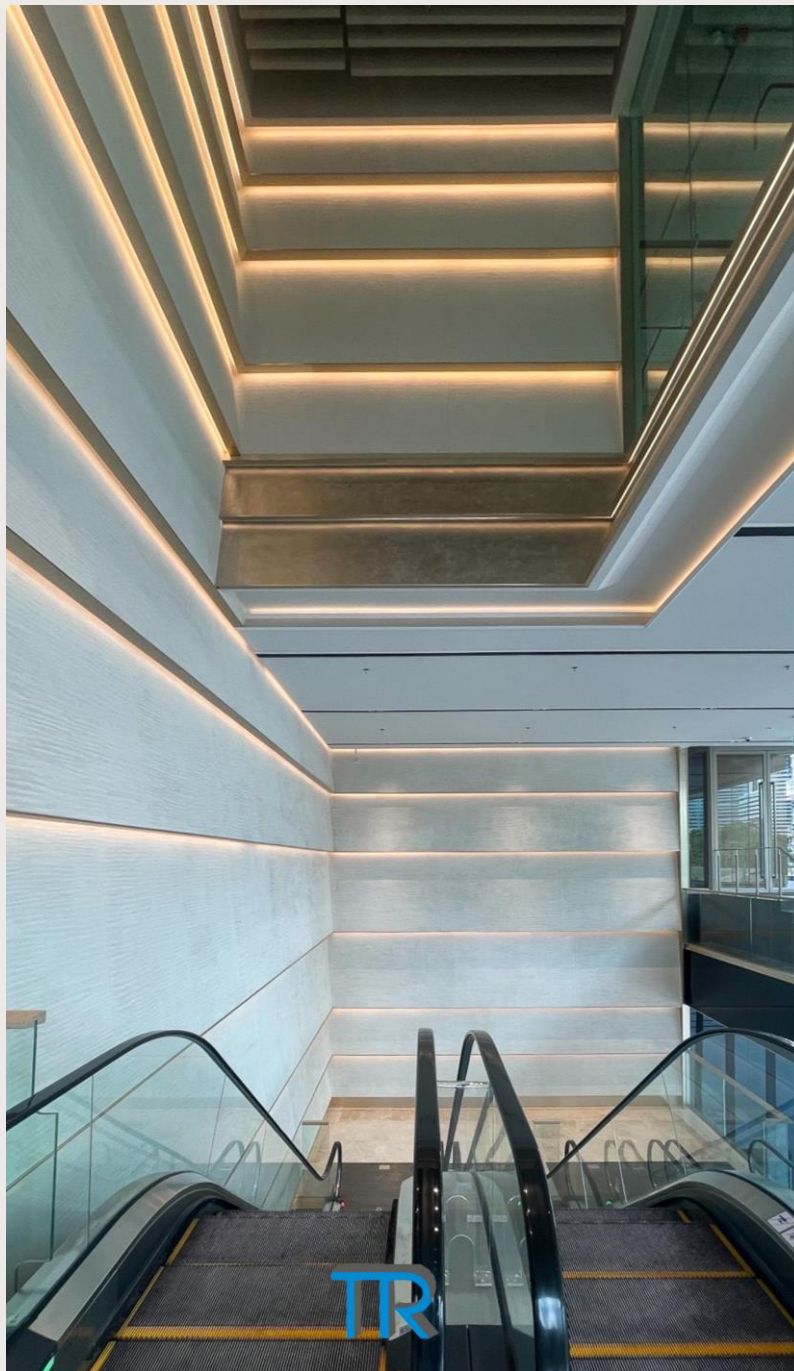
TRAVERTINE

A classic, low sheen finish with a natural aesthetic.

Travertine is a natural lime and marble polished plaster with a directional quality similar to that of natural travertine stone. The open, low sheen finish has an organic horizontal pattern that appears as different tones due to the unique application technique.







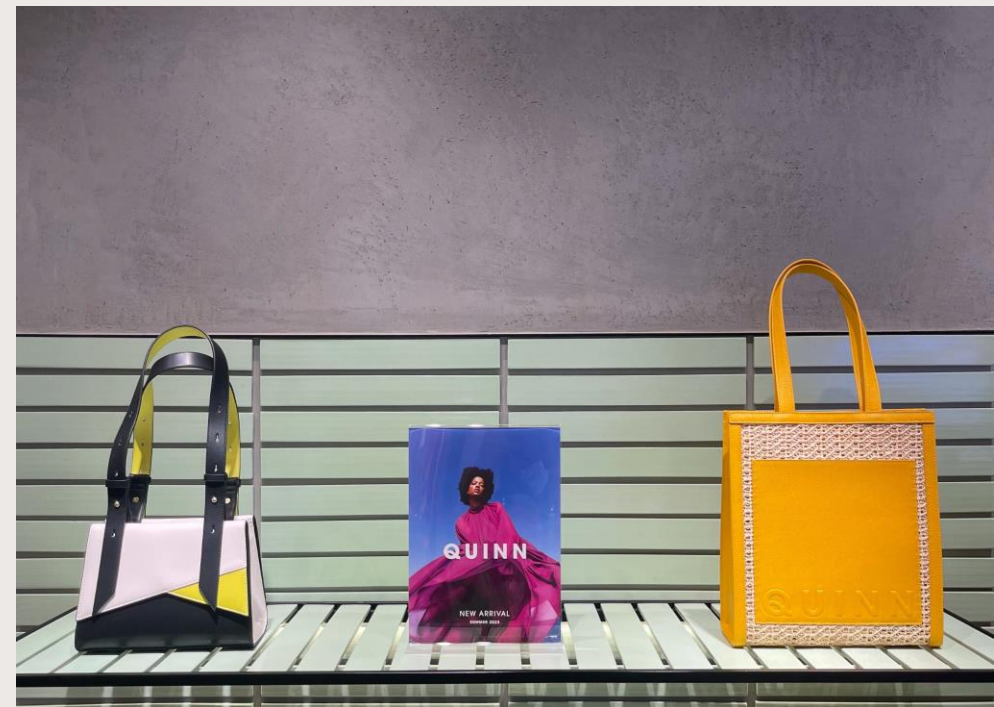




Concrete

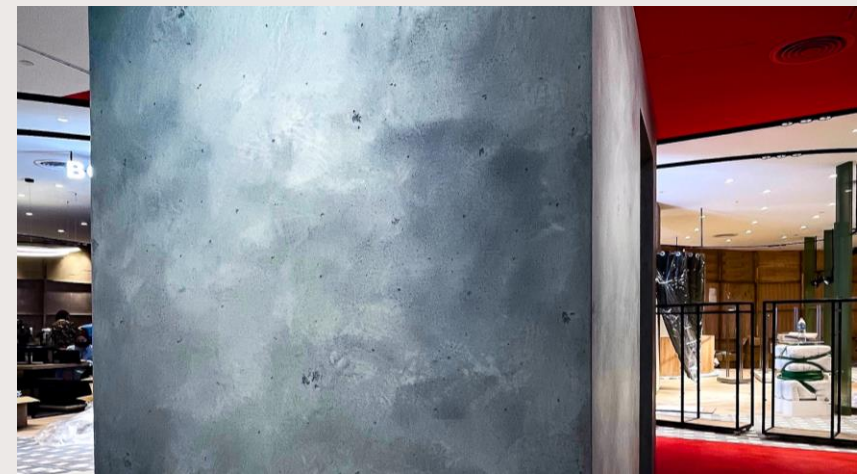
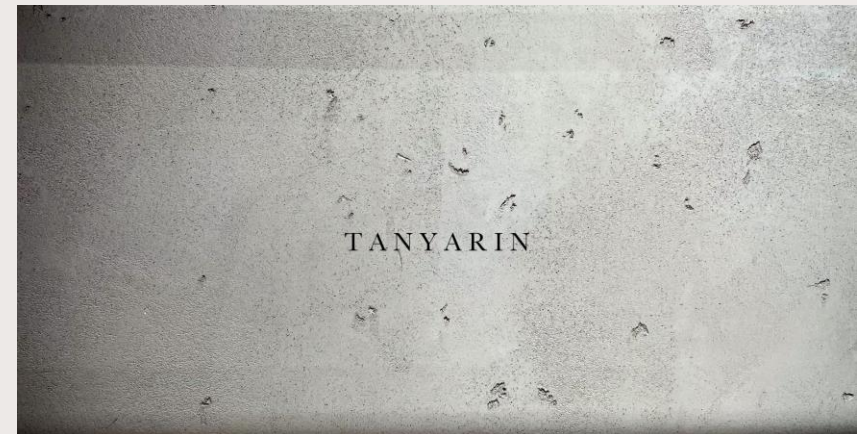
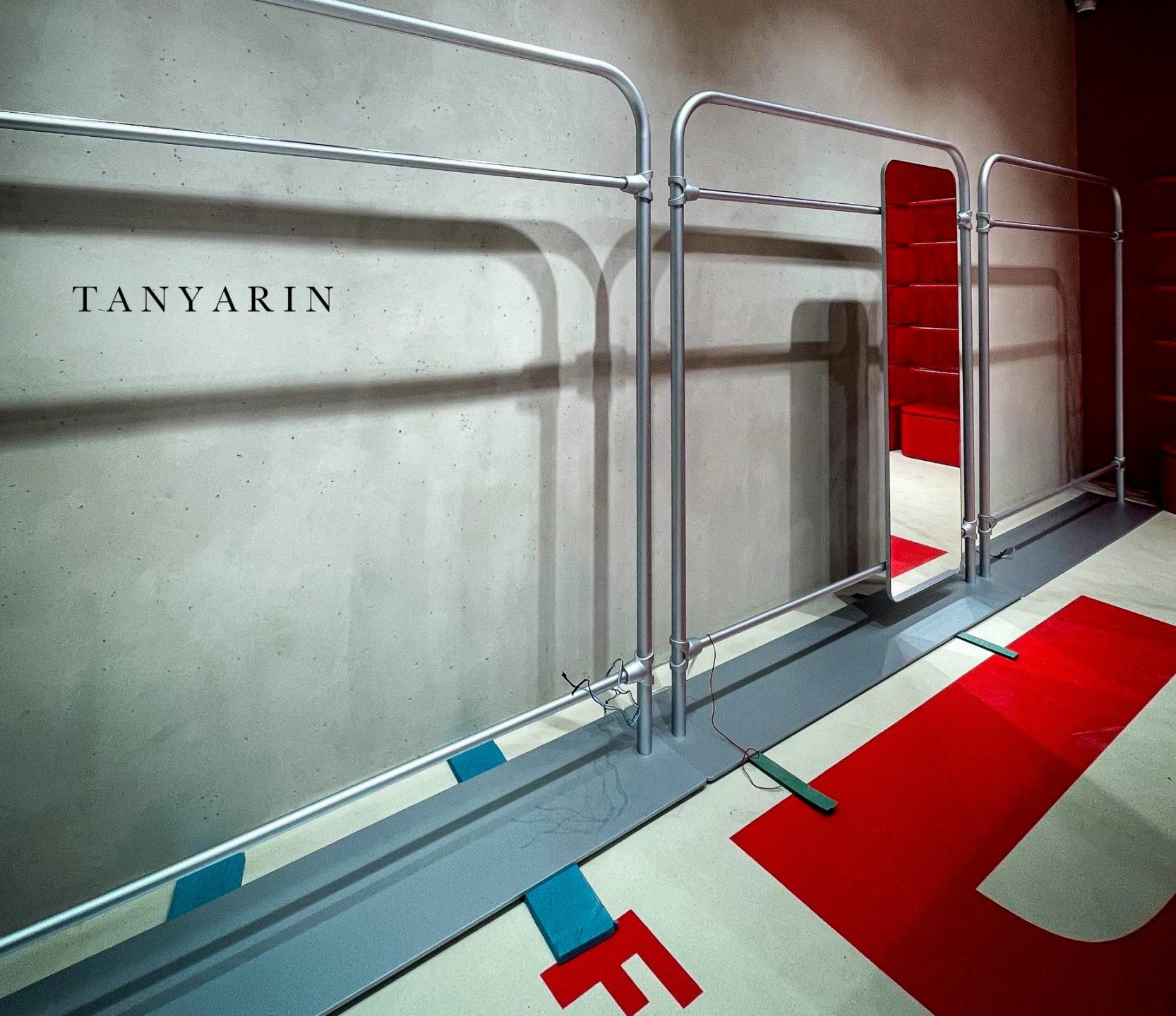
As your desire, semi-polished finish with an urban feel or textured finish with an industrial chic feel are here.





TANYARIN







TR



COFFEE
SPACE
RELATIONSHIP



TR





TANYARIN



Beautified **CONCRETE**



TR



Beautified CONCRETE



What's "Beautified Concrete" ?

Beautified concrete is one of decorative concrete types, refers to the use of concrete as a design element in residential and commercial properties to enhance the aesthetic appeal of a space. This involves grinding and polishing the surface of concrete to create gloss / matt / semi – gloss surface, rough look but smooth touch without dust while it is being kept concrete structure and concept of concrete construction. Some holes remain to appeal grunge style. Beautified concrete is popular because it offers a durable and cost - effective way to achieve a variety of decorative effects while maintaining the structural integrity of the material. It can be used both indoors and outdoors to enhance the overall aesthetics of a property. After people have finished wall and ceiling with pre – cast concrete, it always comes up with untidy areas, dirty spots, holes, stain, ugly colour and dust. Owners use the above techniques of decorative concrete to make it better, but unfortunately, they lose concrete concept and grunge style. Tanyarin is a skilled concrete artisan who can certainly create beautified concrete with a grunge style. Grunge style often incorporates elements of ruggedness, weathering, and an aged appearance, and these characteristics can be achieved through various techniques and finishes applied to concrete.

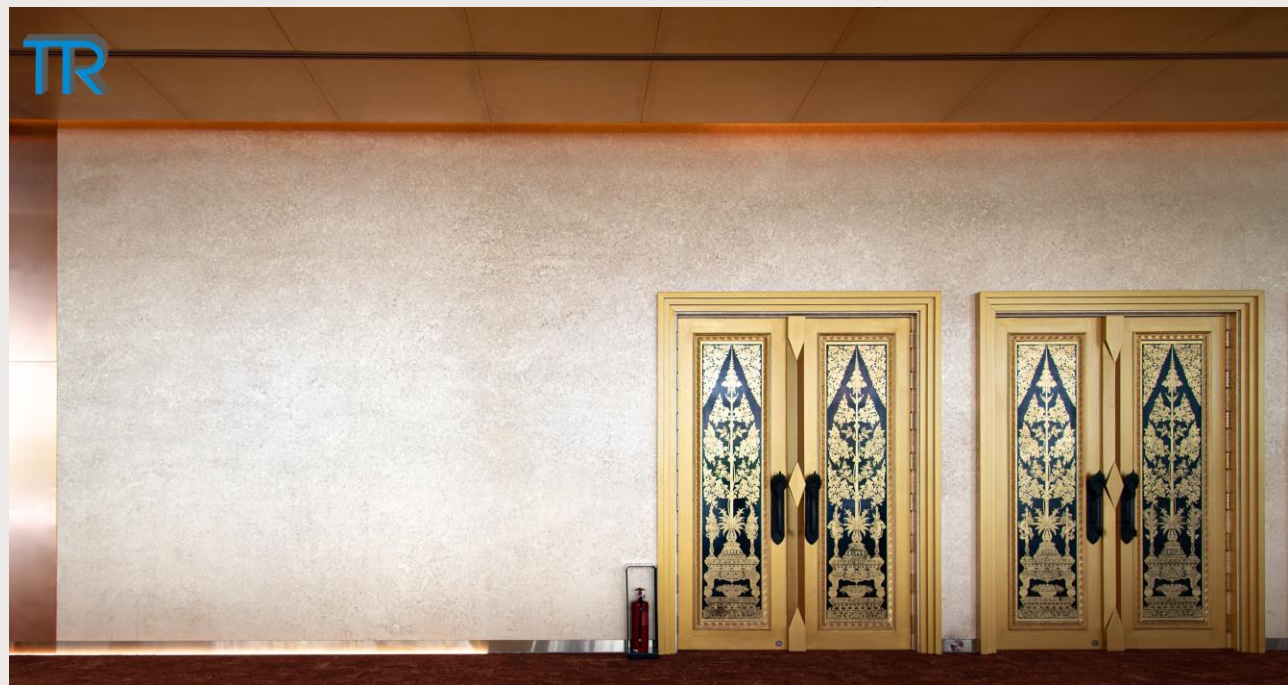
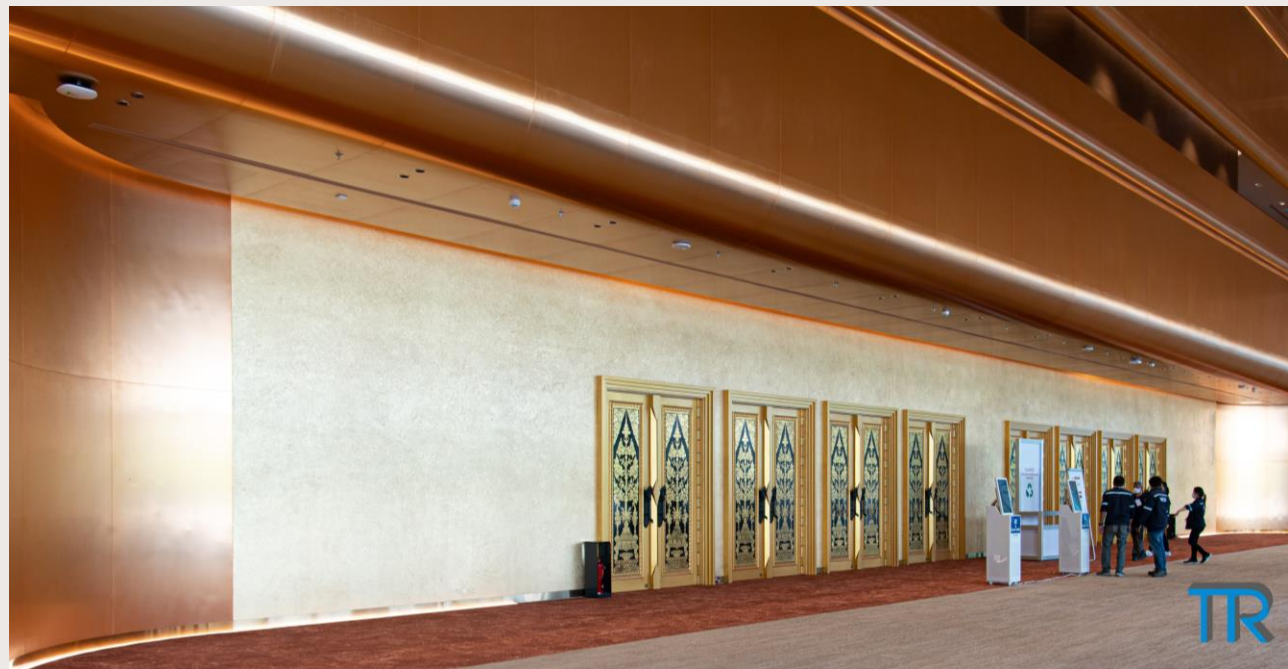
[More ..](#)

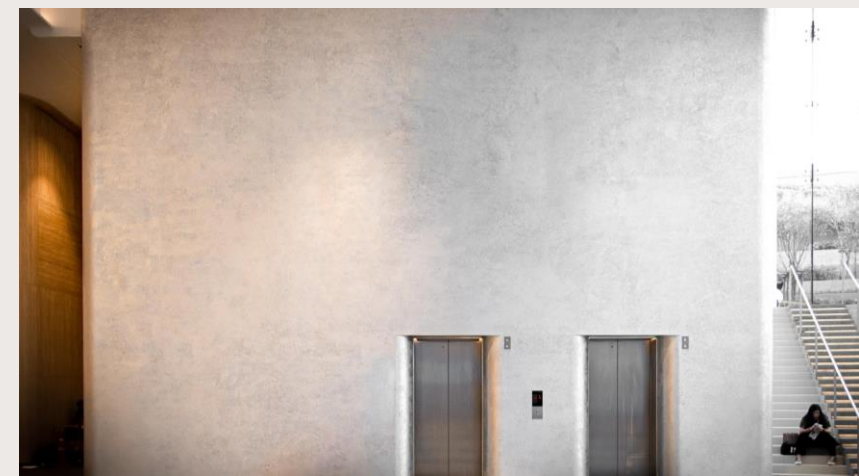
GILDING

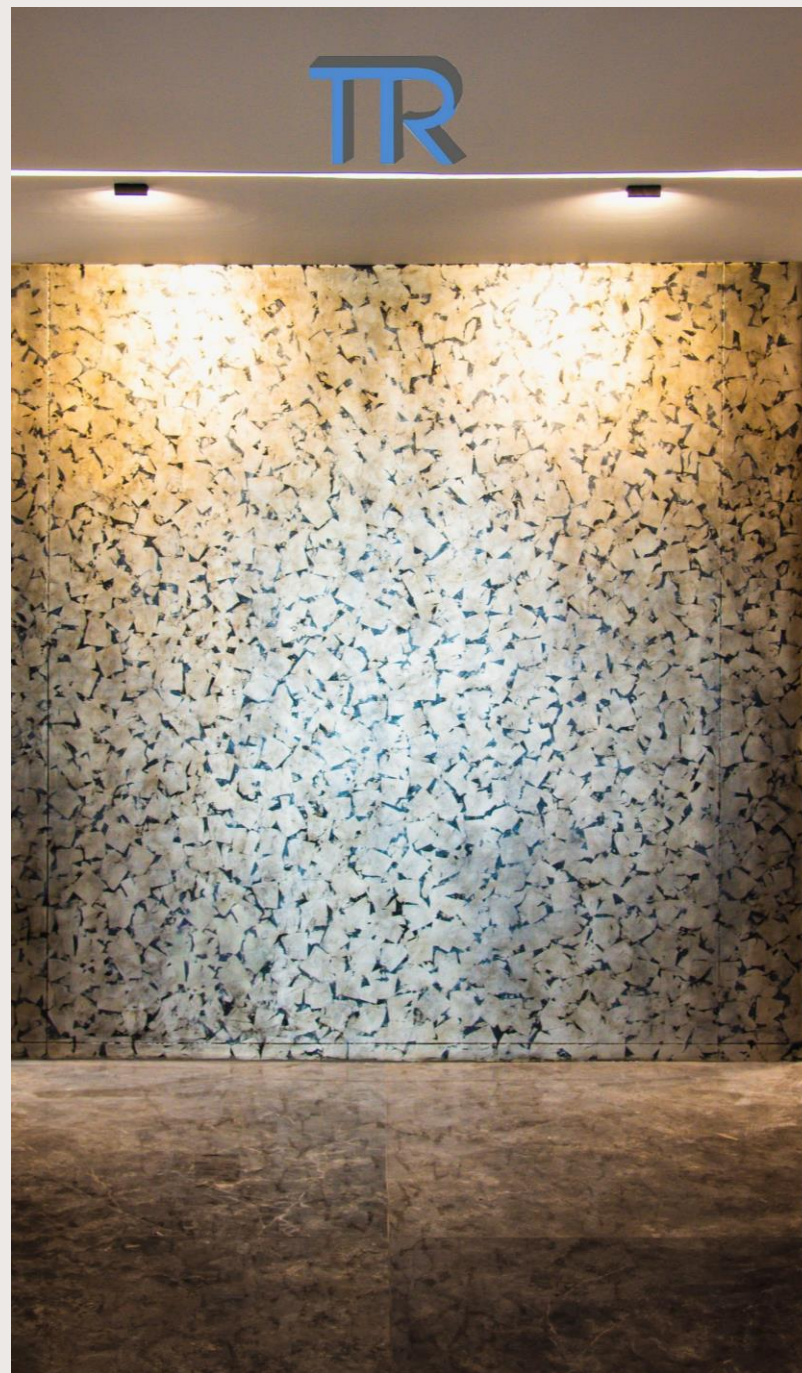
TR







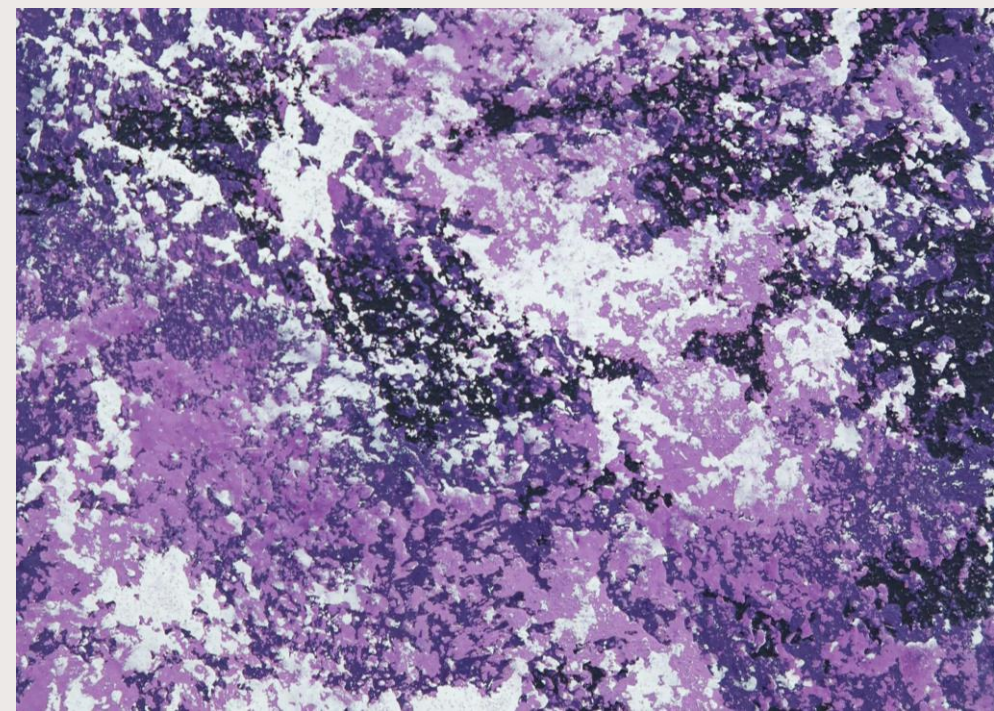
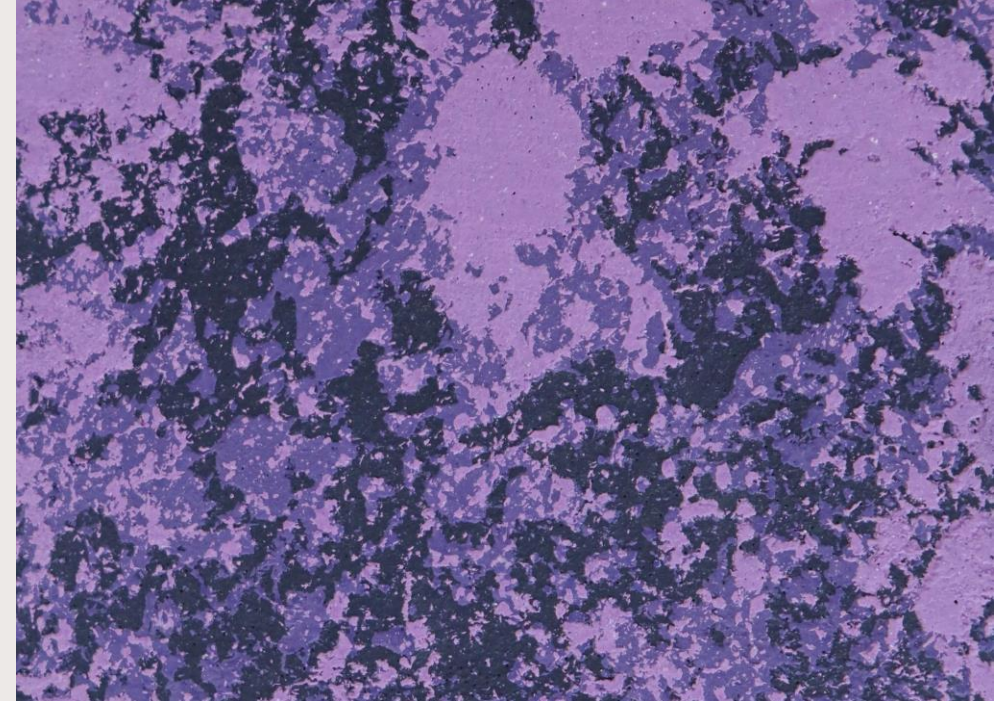






SPECIAL PAINT

Tanyarin makes it special by Metallic, Pearlescent and Faux Finish techniques.

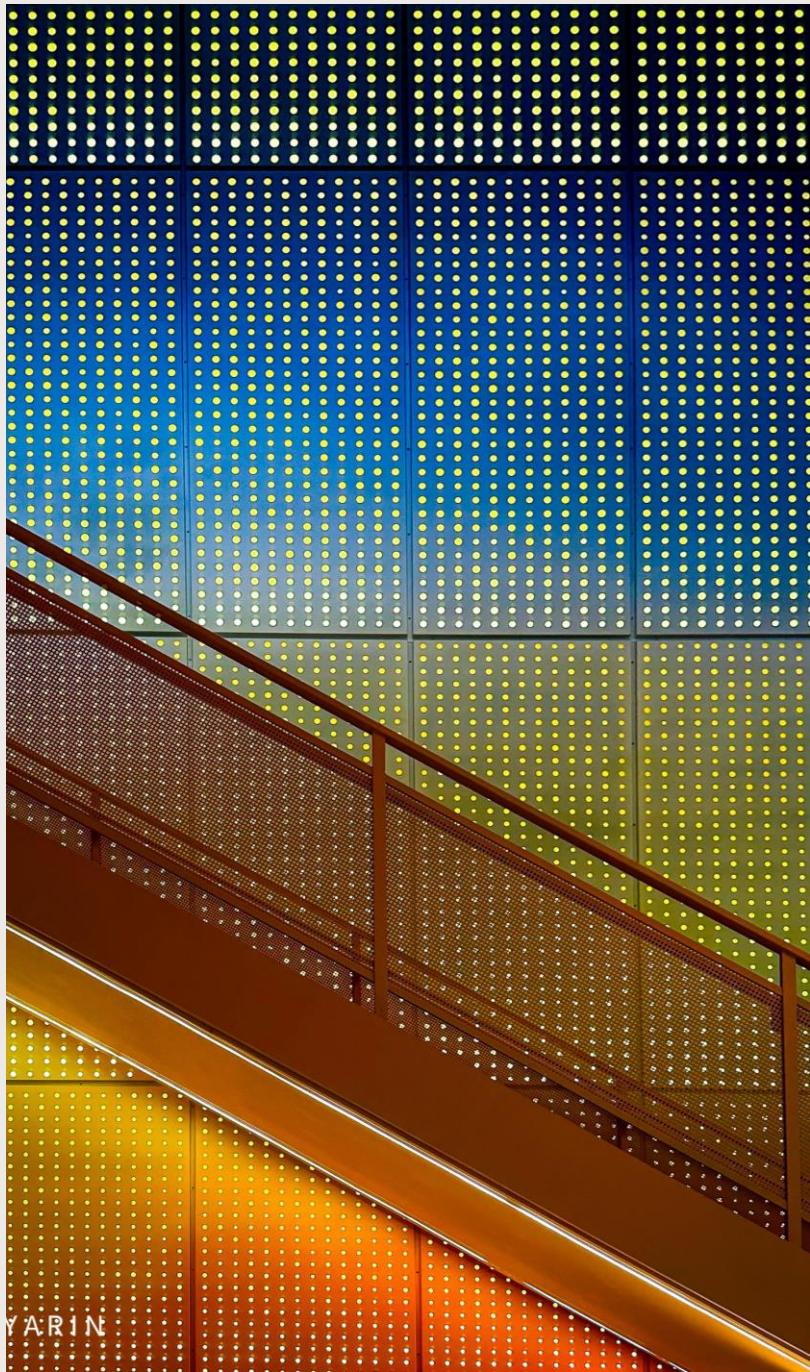
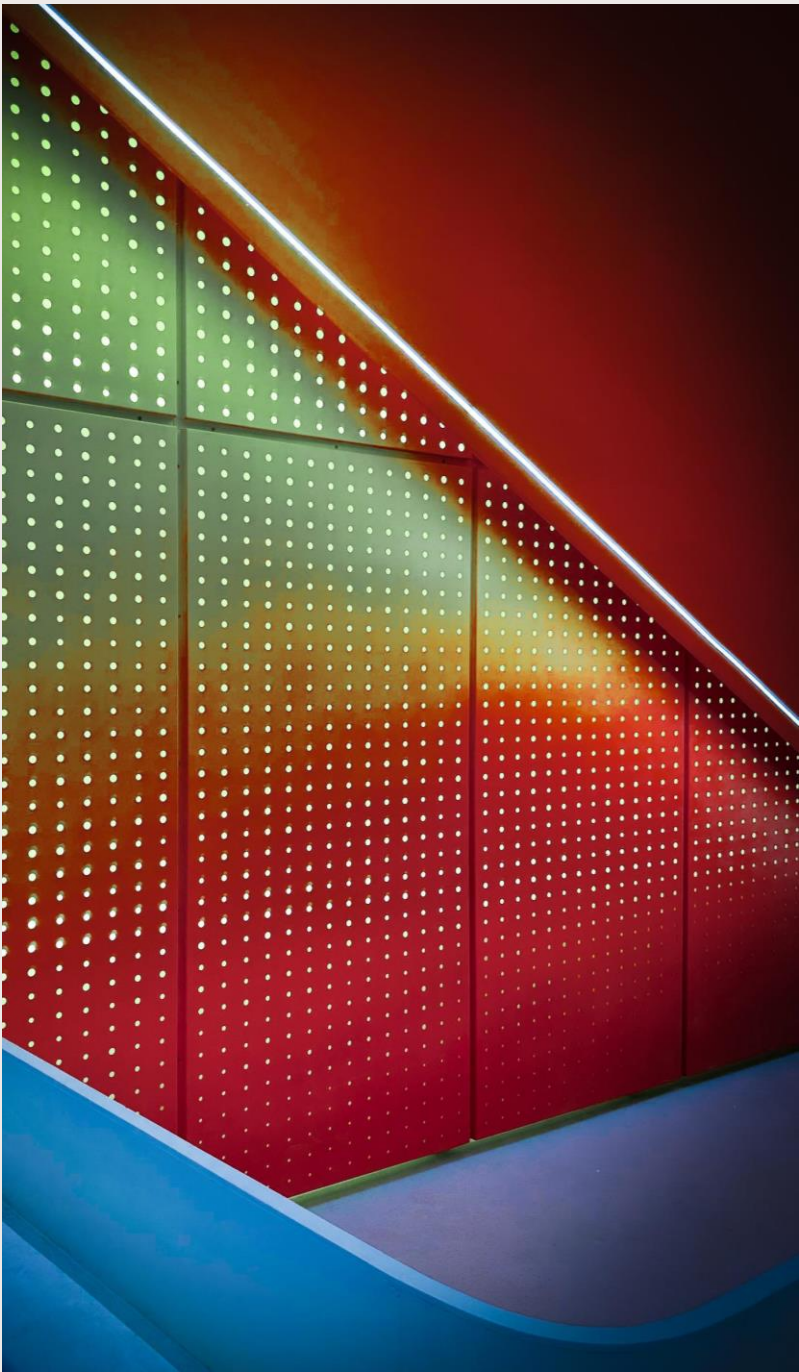


TR

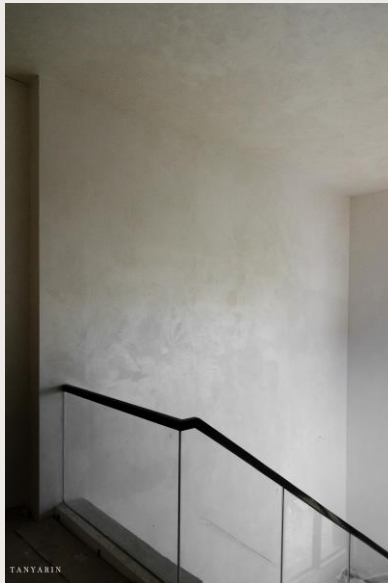












A minimalist interior space with a large, light-colored wall on the left. A large, arched opening in the wall reveals a kitchen area with a white countertop, a sink, and a stove. A wooden box sits on the countertop. To the right of the kitchen area, another arched opening leads to a hallway with a wooden floor and white walls. The ceiling is white with a track lighting system. The overall aesthetic is clean and modern.

TANYARIN

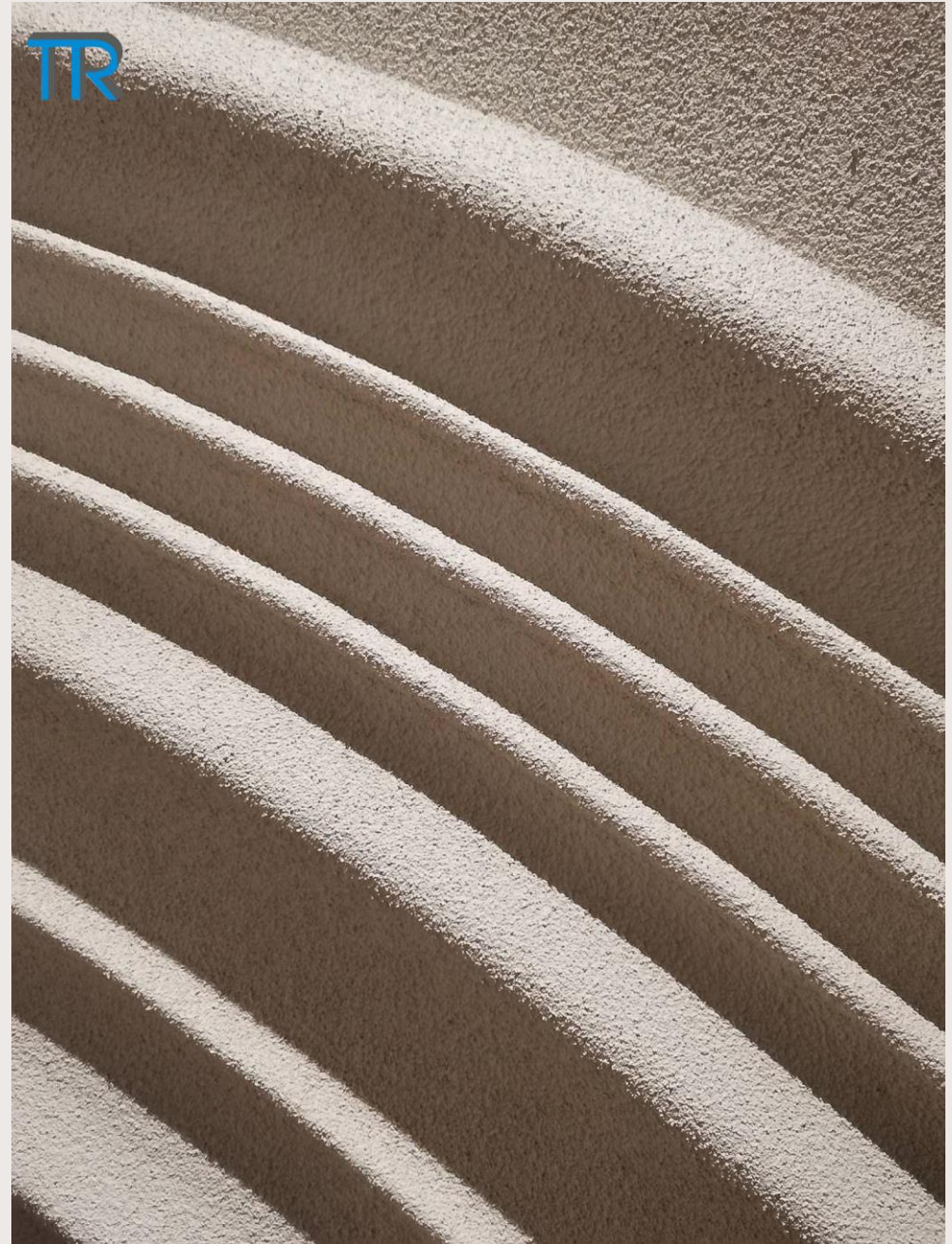




TR



TR



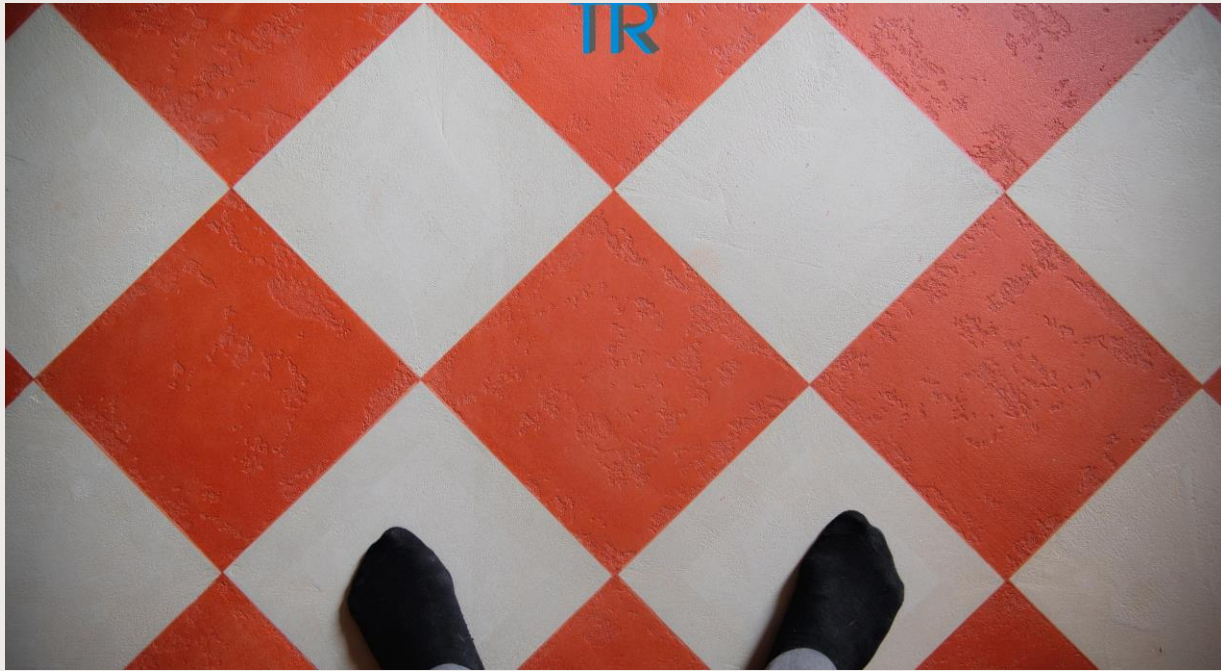
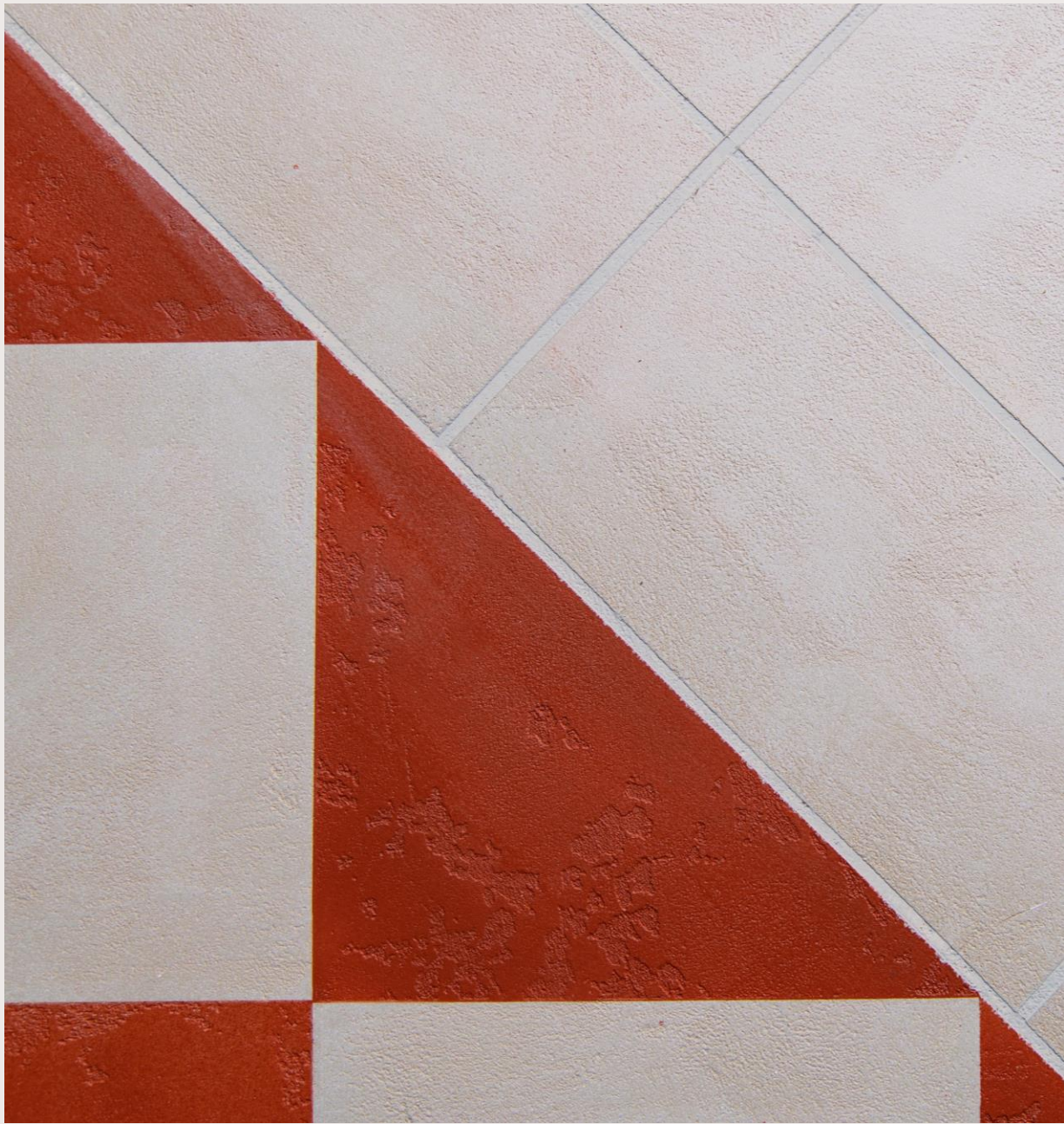


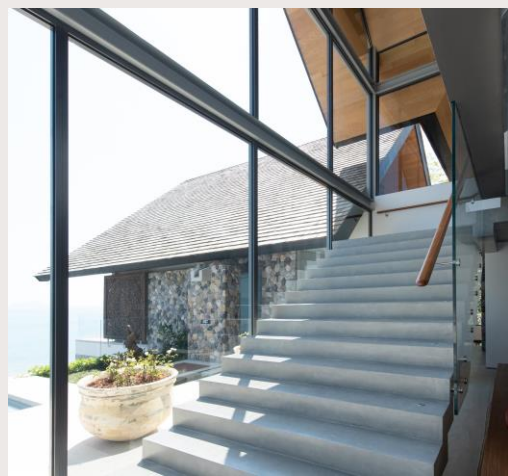
FLOOR

MicroMarmo Floor by NanoCement

Top - class seamless design finish from wall to floor. 100% Eco - friendly , Low VOC.

Pure one component powder product (mineral finish with marble + natural components). Not resin. Not self - levelling. Diversified effects. Thickness 2 - 3 mm but **STRONG !!** for mechanical resistance scratch. **Not Crack** if background is well prepared. Waterproof. Available in 150 colours.











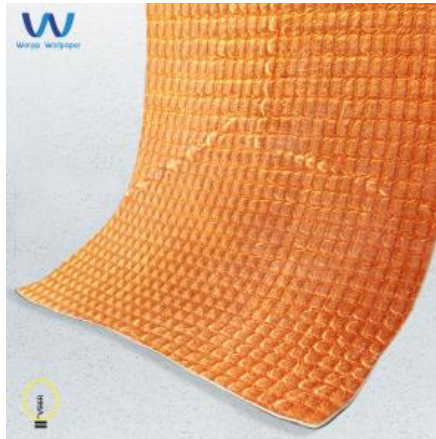
TANYARIN



TANYARIN



WARPP



Warpp wallpaper, manufactured by VEER, the first innovative product in Thailand that combines the aesthetic appeal of artistic stucco with the flexibility and ease of installation typically associated with wallpaper. Special paint, stucco and polished plaster are all possible to be on Warpp wallpaper and bended to existing wall and furniture.

Surface on Warpp :

Special Paint / Stucco / Polished Plaster

Size : W1 x L10 m , Thickness 2 - 3 mm

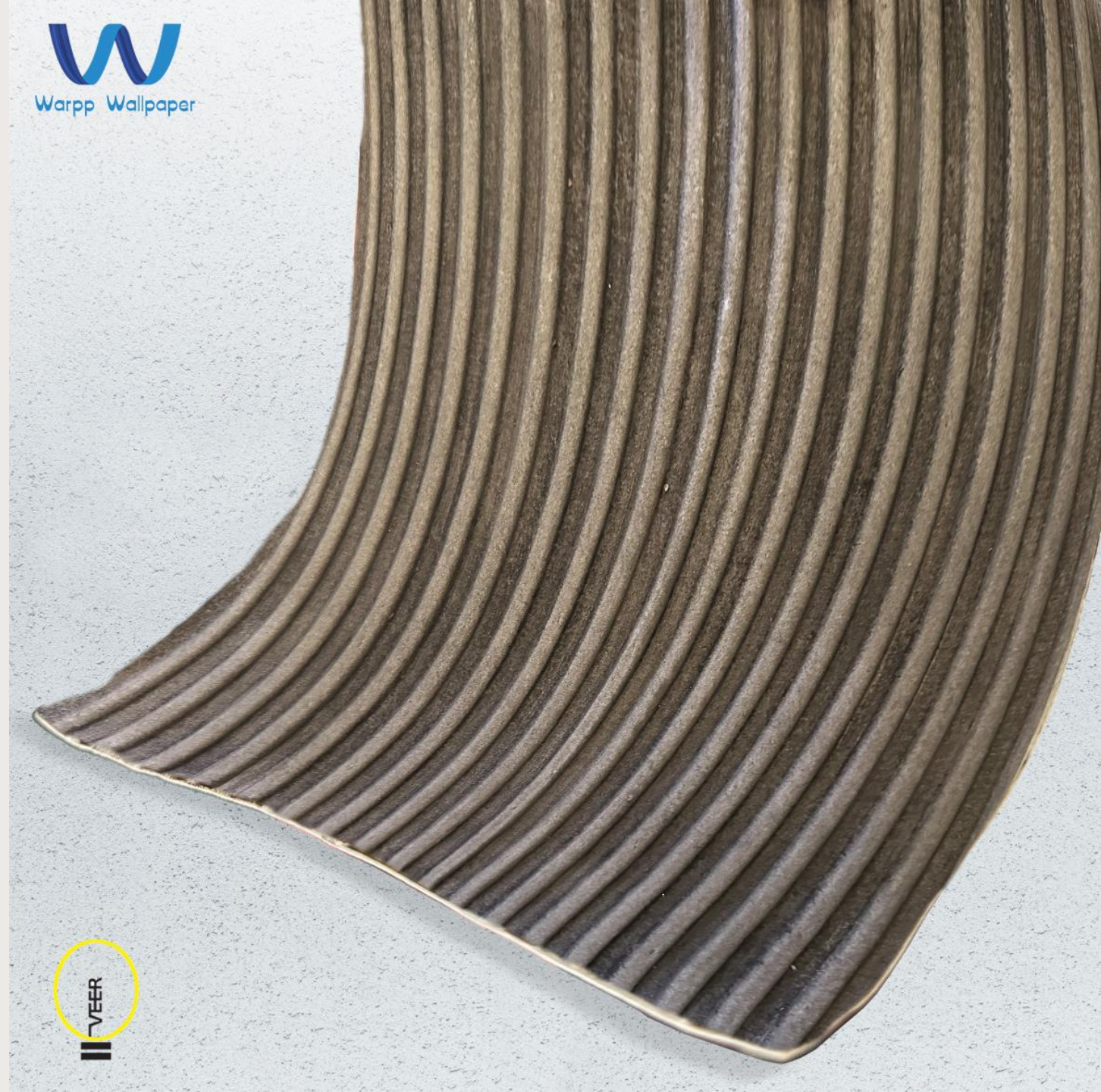
Installation : Easy Installation like Wallpaper

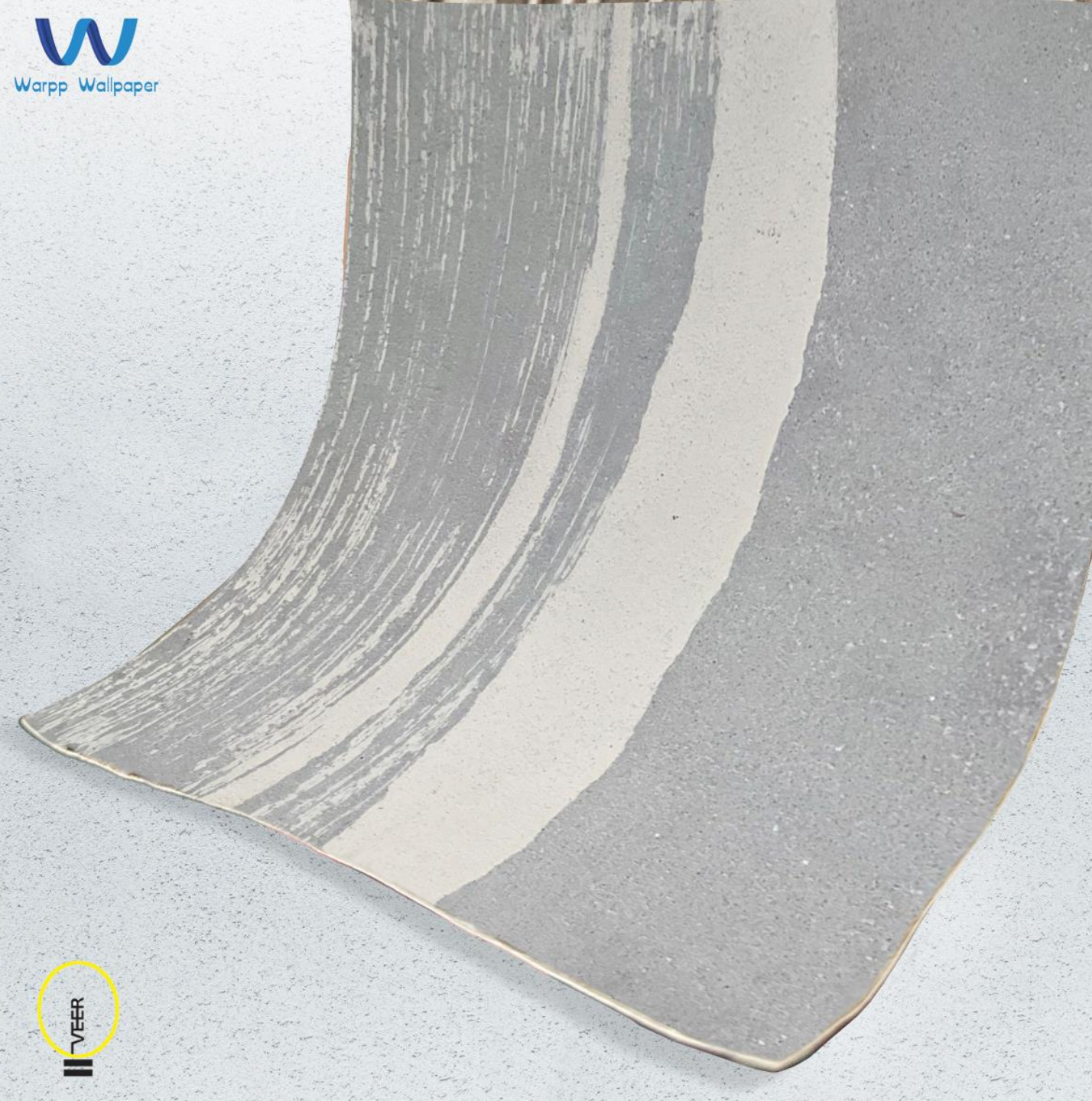
Cleaning & Maintenance : Wipe off by Damp Cloth






Warpp Wallpaper





W
Warpp Wallpaper



What's in 2024 ?



MAXimalism



Sustainability

TR



Biophilic
Design



MAXimalism in interior design is characterized by an abundance of elements, patterns, colors, and textures. It often involves a mix of various styles and eras, creating a rich and eclectic look.

Bold Colors and Patterns : Maximalism tends to embrace vibrant colors and intricate patterns. In 2024, you might see a continued emphasis on bold and unexpected color combinations, as well as the use of striking patterns like florals, geometric shapes, and animal prints.

Eclectic Furnishings : Maximalist interiors often feature a diverse mix of furniture styles and pieces from different periods. Look for a combination of antique and modern furniture, possibly with an emphasis on statement pieces that draw attention.

Texture Play : Expect maximalist interiors to explore a variety of textures, from plush velvets and luxurious silks to rugged leathers and natural fibers. The juxtaposition of textures can add depth and interest to the overall design.

Artistic Expression : Maximalism allows for the display of a wide range of artworks, from paintings and sculptures to quirky and unique pieces. In 2024, there might be a focus on supporting local or emerging artists, bringing a sense of individuality to the space.

Global Influences : Maximalism often draws inspiration from various cultures and design styles worldwide. In 2024, you might see an increased incorporation of global influences, with an emphasis on handcrafted items, artisanal details, and cultural motifs.

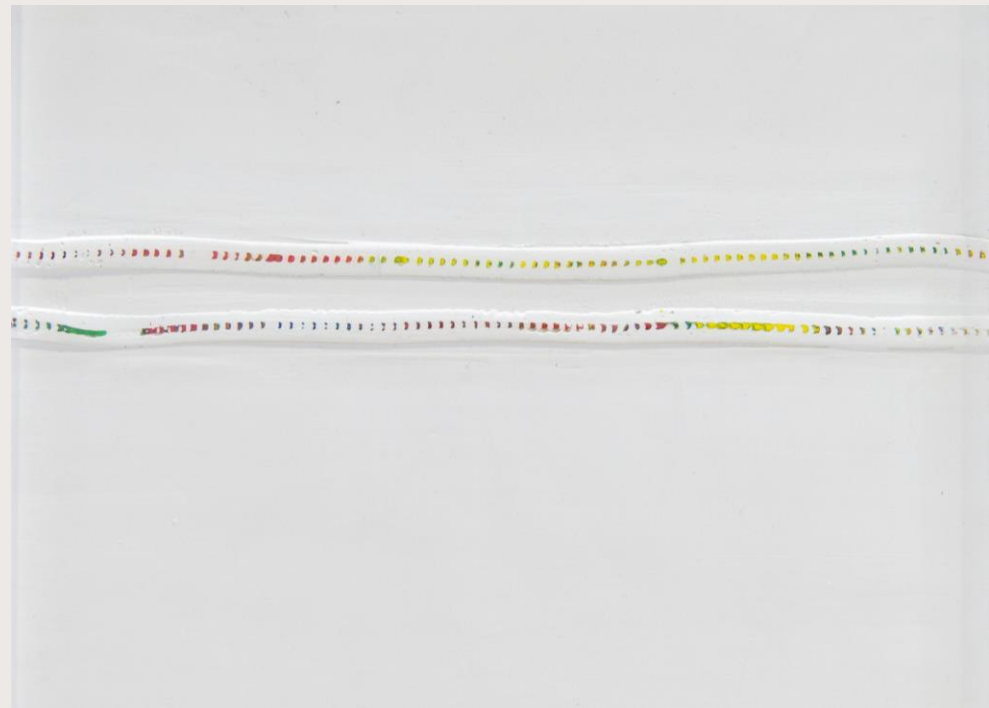
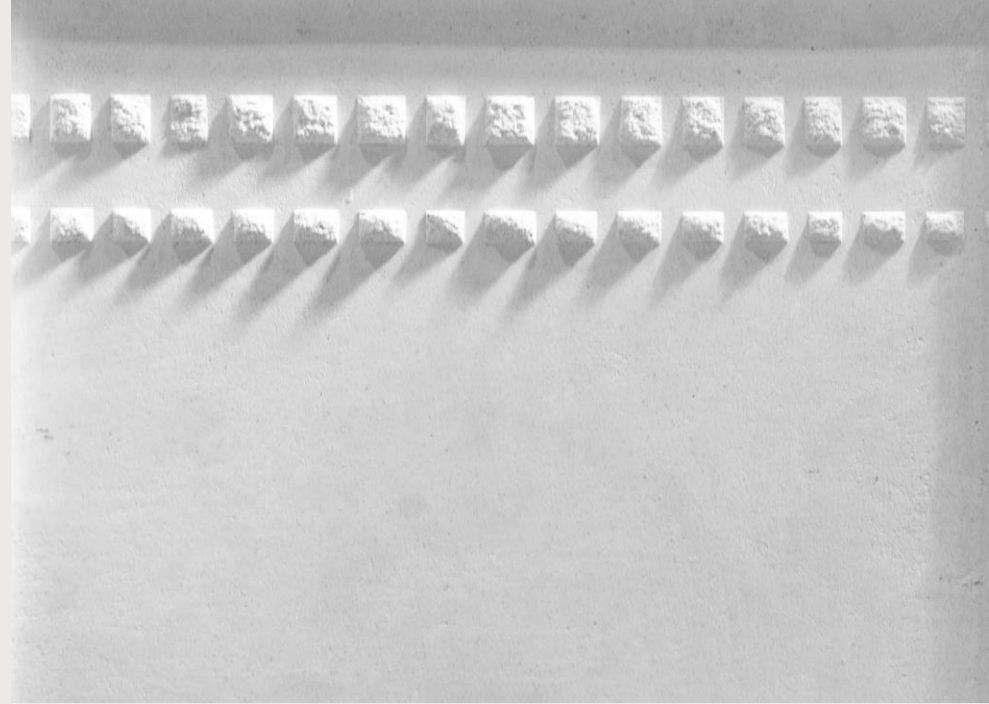
Luxurious Details : Maximalist interiors often feature luxurious details such as gold or brass accents, crystal chandeliers, and ornate accessories. These opulent elements contribute to the overall sense of extravagance.

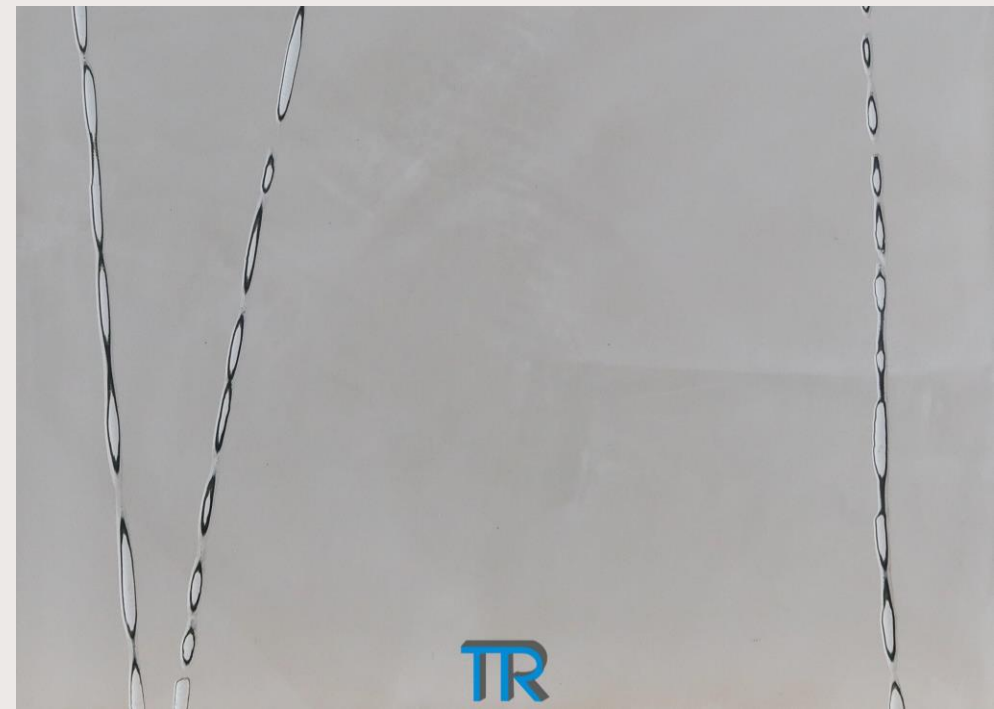
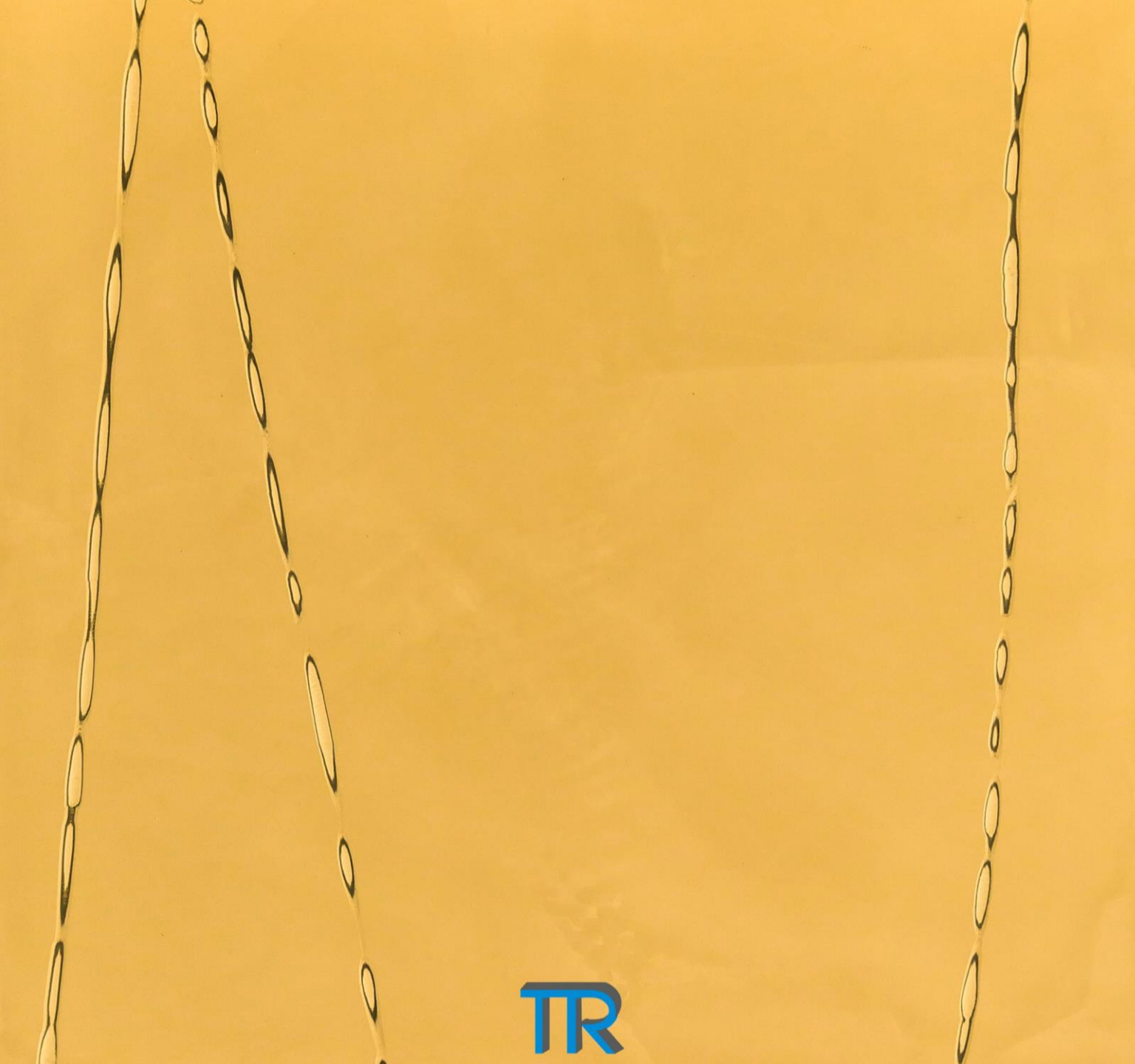
Sustainable Maximalism : With an increasing emphasis on sustainability, maximalist designs in 2024 might integrate eco-friendly materials, vintage or upcycled furniture, and a focus on longevity and quality over mass production.

How to bring TANYARIN maximalist interior design into your space
Let's see next for inspiration





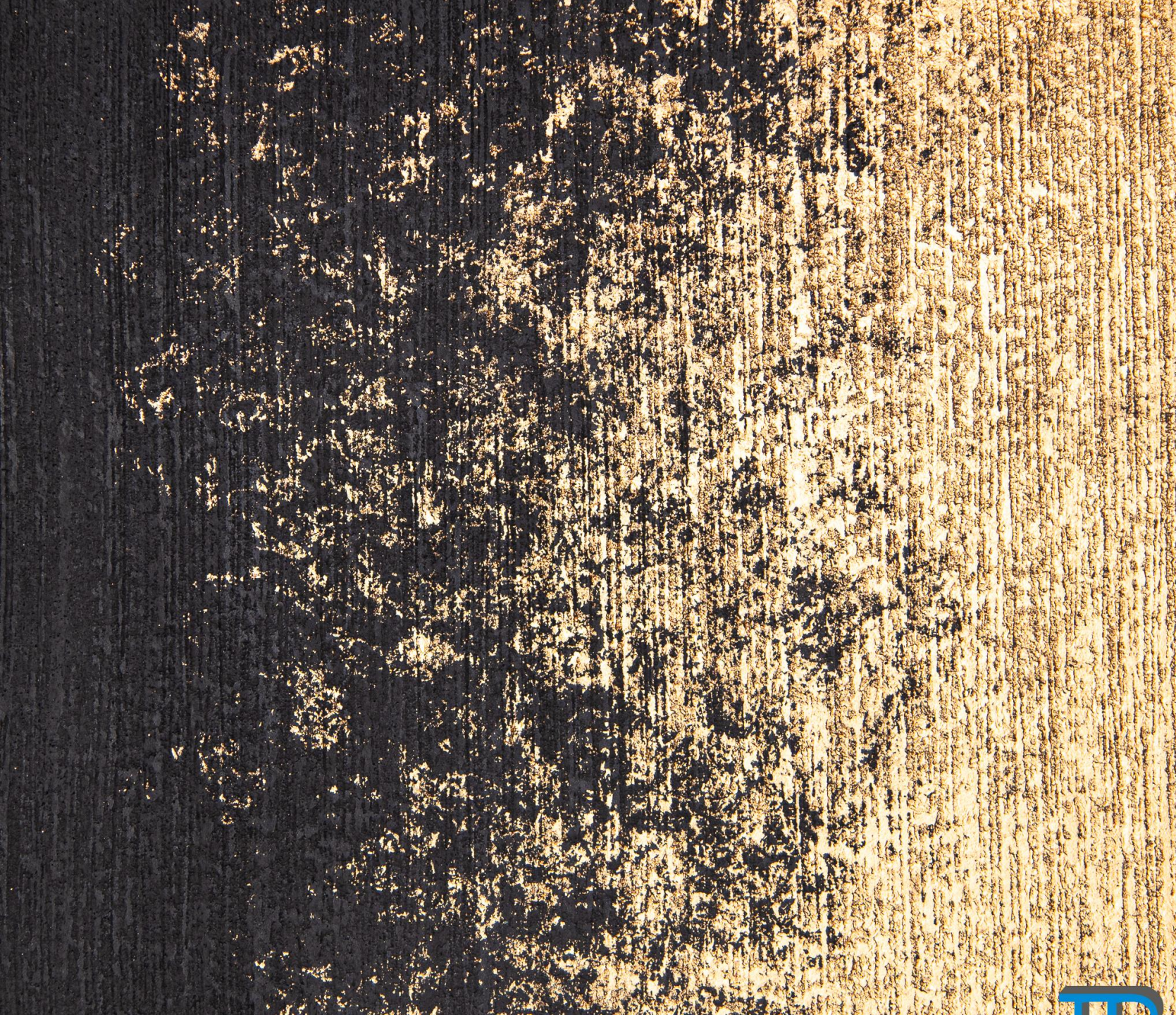




TR







TR



TR



TR







S

Sustainability



Recycling & Reducing Waste

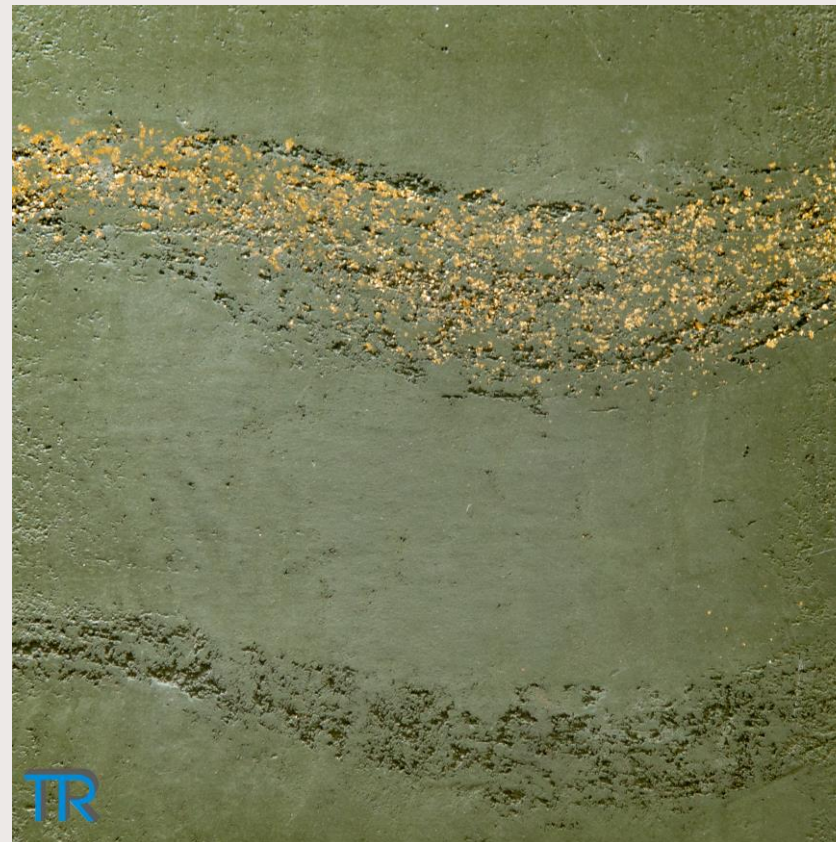
Tanyarin recycled plastic rope and some wasted material, then added to stucco wall. We use eco-friendly material for environmental and health concern.





TR

BIOPHILIC DESIGN

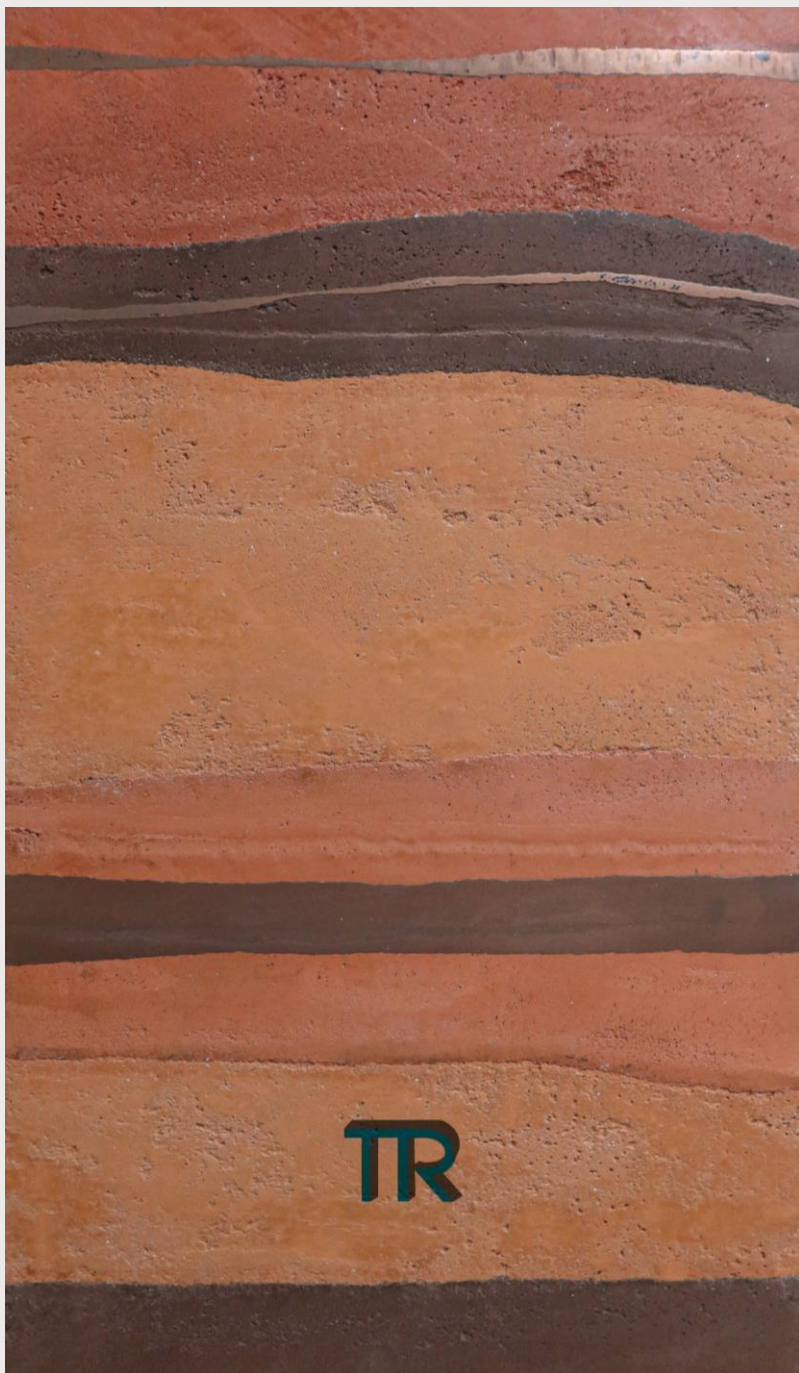


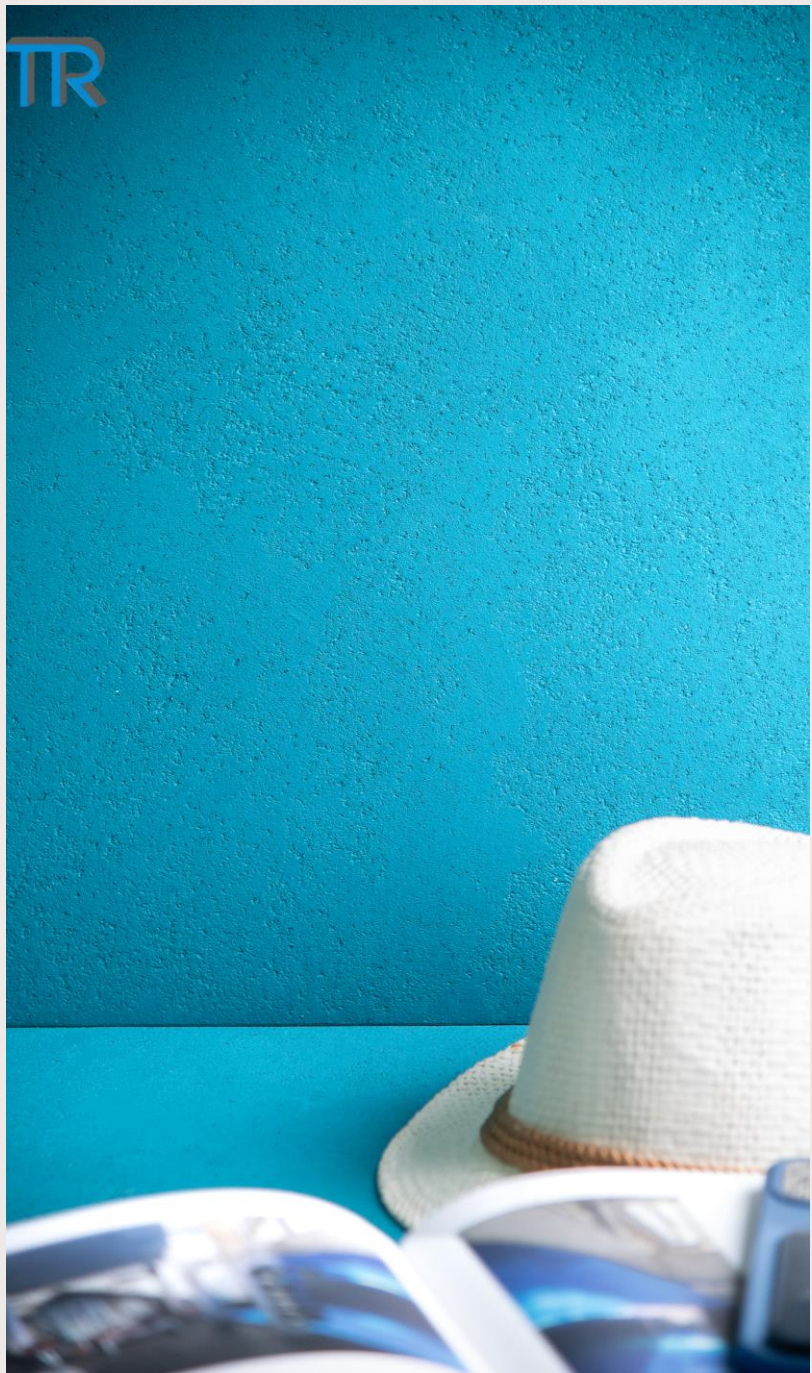
Biophilic design is an innovative approach to architecture and interior design that seeks to incorporate elements of nature into the built environment. The term "biophilia" is derived from the Greek words "bio" (life) and "philia" (love), and it refers to the innate human connection with nature. Biophilic design aims to strengthen this connection by integrating natural elements, materials, and patterns into indoor spaces, ultimately improving the well - being and overall experience of the occupants.

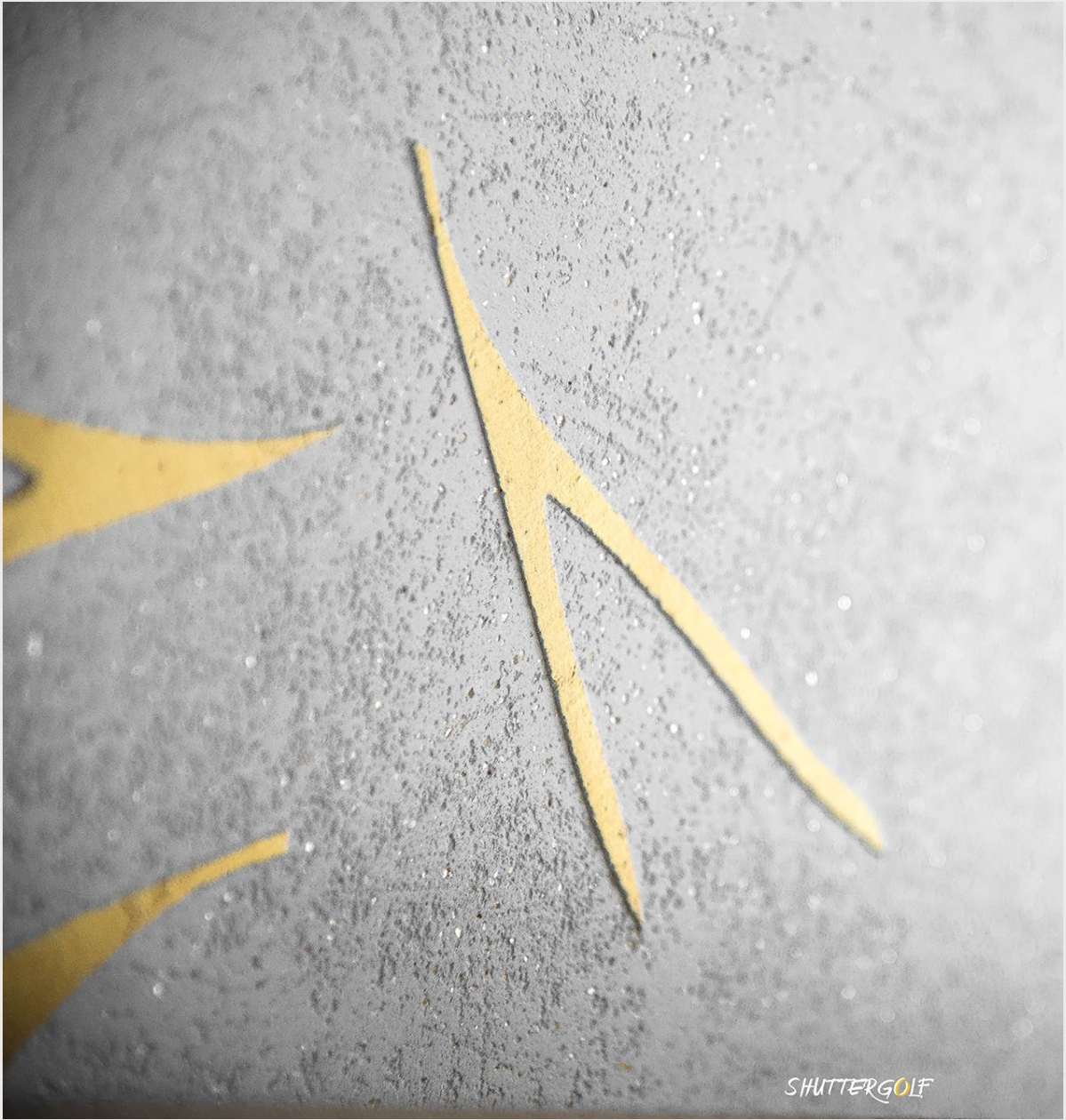


**Innovative
Rammed Earth**
Tanyarin created
Rammed Earth
look together
with adding
velvet for more
creative wall.











SHUTTERGOLF



TANYARIN

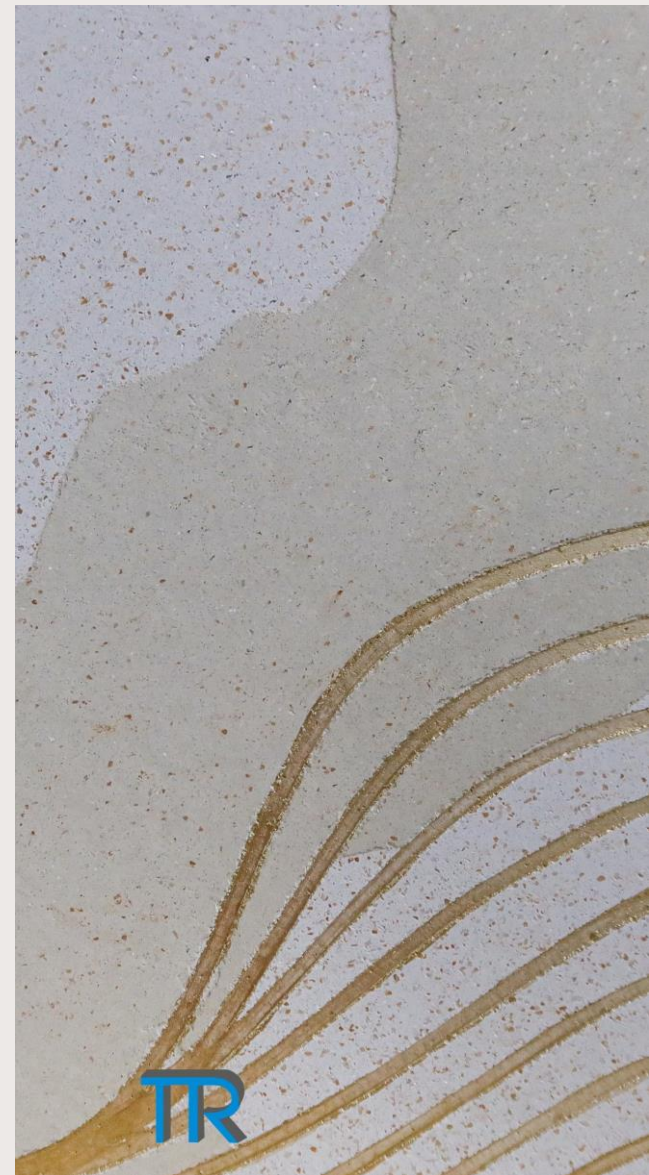
Texture + Pearlescent
Special Paint

Zero VOC
Sustainability

Biophilic Design

Connecting Crafted Surface to
Natural Scenes





TANYARIN DECORATION

crafted surface
finishing for interior
and exterior design

www.tanyarin.com

